

Historic, archived document

Do not assume content reflects current scientific knowledge, policies, or practices.

62,09

NOV 23 1909

Armstrong Nurseries

ESTABLISHED 1889



1910

JOHN S. ARMSTRONG

ONTARIO CALIF.

1 9 1 0

Our Popular Introduction Offer:


OUR introduction offer having met with universal favor with patrons the past few years, we offer them again this season.

Whether you live in the city or country, here is a bargain; we want to introduce our stock, hence our liberal offers.

A Model Home Orchard for \$5.00.

Our selection of choice varieties, which will be arranged so as to have fresh fruit on the table from May to December.

- | | |
|----------------------------------|--------------------------------|
| 6 Peach trees, standard sorts | 2 Cherry trees, standard kinds |
| 6 Apple trees, for home use | 1 Nectarine tree, best red |
| 1 Crab Apple tree, large variety | 1 Orange Quince tree |
| 4 Plum trees, selected kinds | 1 Soft Shell Almond tree |
| 4 Pear trees, early to late | 6 Grape vines, assorted |
| 2 Apricot trees, table varieties | No two fruits alike |

 PURCHASER PAYS FREIGHT OR EXPRESS.

Plants to an Acre at Given Distances apart:

Distance Apart.	No. of Plants.	Distance Apart.	No. of Plants.	Distance Apart.	No. of Plants.
3 inches by 4 inches	522,720	4½ by 4½ feet	2,150	14 feet by 14 feet	222
4 inches by 4 inches	392,040	5 feet by 1 foot	8,712	15 feet by 15 feet	193
6 inches by 6 inches	174,240	5 feet by 2 feet	4,356	16 feet by 16 feet	170
1 foot by 1 foot	43,560	5 feet by 3 feet	2,904	16½ feet by 16½ feet	160
1½ feet by 1½ feet	19,360	5 feet by 4 feet	2,178	17 feet by 17 feet	150
2 feet by 1 foot	21,780	5 feet by 5 feet	1,742	18 feet by 18 feet	134
2 feet by 2 feet	10,890	5½ feet by 5½ feet	1,440	19 feet by 19 feet	120
2½ feet by 2½ feet	6,960	6 feet by 6 feet	1,200	20 feet by 20 feet	108
3 feet by 1 foot	14,520	6½ feet by 6½ feet	1,031	25 feet by 25 feet	69
3 feet by 2 feet	7,260	7 feet by 7 feet	888	30 feet by 30 feet	48
3 feet by 3 feet	4,840	8 feet by 8 feet	680	33 feet by 33 feet	40
3½ feet by 3½ feet	3,555	9 feet by 9 feet	537	40 feet by 40 feet	27
4 feet by 1 foot	10,890	10 feet by 10 feet	435	50 feet by 50 feet	17
4 feet by 2 feet	5,445	11 feet by 11 feet	360	60 feet by 60 feet	12
4 feet by 3 feet	3,630	12 feet by 12 feet	302	66 feet by 66 feet	10
4 feet by 4 feet	2,722	13 feet by 13 feet	257		

Proper Distances between Trees and Plants:

VARIETY	FT. APART
Orange and Lemon trees	20 to 30
Peach, Plum and Apricot trees	20 to 25
Pear and Cherry trees	20 to 25
Apple trees	25 to 35
Walnut trees	40 to 50
Almond trees	22 to 25
Grape vines	8 to 10
Blackberry and Dewberry Plants	6 × 7
Raspberry plants	3 × 5
Strawberry plants	1½ × 3
Eucalyptus, for timber culture	6 to 10

INTRODUCTORY NOTE.

We take pleasure in presenting this edition of our Annual Catalog to patrons, at the same time thanking them for their generous patronage which has contributed so much to our success and, we believe, to their pleasure and profit.

Over twenty years ago the Armstrong Nurseries started growing trees on a small town lot. We are proud to say that the business has gradually increased, so that at present over one hundred acres are devoted to the growing of stock with which to supply an ever increasing demand.

Our constant aim is to supply reliable stock direct from our nurseries to the growers, thus eliminating the middleman and his profit, thereby giving the customer full value and us a reasonable profit.

When ordering please state whether substitution will be permitted in case we may be out of any variety or size ordered. When no instructions accompany the order, we feel at liberty to replace stock which is short with other similar varieties. In all cases we keep our customer's interests in mind.

IN AN ADVISORY WAY.

Remittances. Orders from unknown correspondents must be accompanied by Draft, Postoffice or Express order or Registered currency for the amount.

Club Orders. We will be pleased to have responsible parties get up club orders and will deal liberally with such.

General Special. Express shipments of nursery stock travel under what is known as the "General Special" rate, which is 20 per cent. less than the first-class rate. We would advise having small shipments go by express, for while the cost is somewhat more than by freight, the difference is often more than made up by the prompt delivery and careful handling. **Small packages, under 4 pounds in weight, may be sent by mail or express (if prepaid) at 8 cents per pound, which usually averages 20 per cent. of the purchase price.**

Caution. Be careful in unpacking to note everything, and either plant, or cover up with moist soil at once. Moisten the roots and do not allow them to become dry.

Treatment Before Planting. Before planting prune off all broken and extra long roots. Peach, plum, apricots, etc., should have side limbs and top cut back to at least half the length.

Planting. Dig holes large enough to allow the roots of the tree to spread out in their natural position, carefully placing the finest and best soil from the surface in among the roots; when the soil is nearly filled in, thoroughly settle the earth by filling in the hole with water; after it settles, fill in the remainder of earth. In most soils the use of water to settle the earth is much better than treading the soil with the foot.

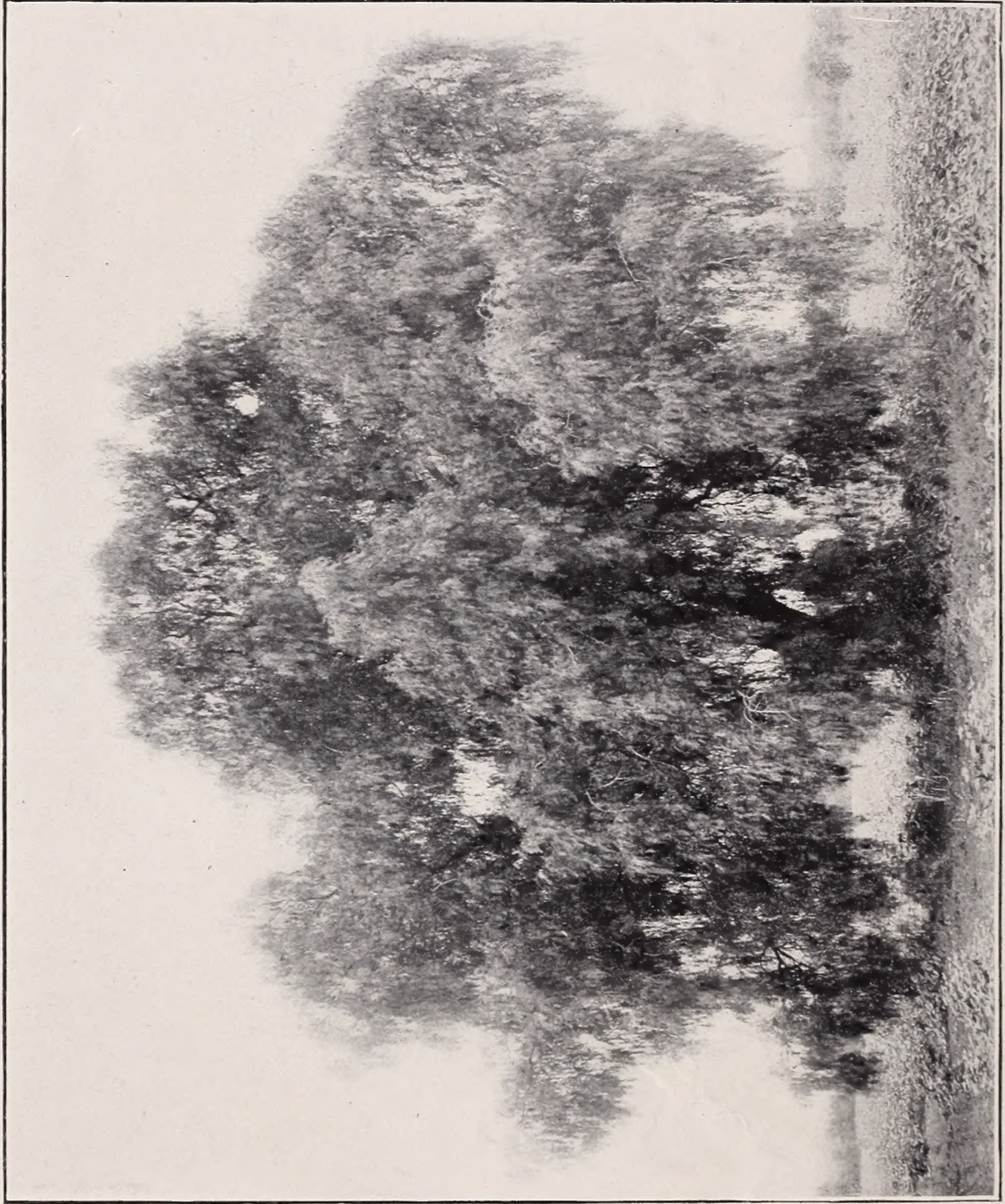
After Culture. The ground should be kept loose and free from weeds. It is advantageous in a dry climate, like ours, to throw around the tree, for a distance of two or three feet each way, a mulch of rough manure or litter. It prevents the ground from drying out and baking.

Address all correspondence to

THE ARMSTRONG NURSERIES,

JOHN S. ARMSTRONG, Proprietor,

ONTARIO, CALIFORNIA.



The California Pepper Tree. *Schinus molle*.

CITRUS FRUITS



Citrus fruits being the leading product of Southern California, we give them first place in this catalog. The area in which they are successfully grown on this Coast has gradually extended from a comparatively small territory in the south to many favored locations throughout the State and Arizona. We are offering this season an exceedingly choice lot of robust and well grown trees in the several varieties.

PRICES: Large size, well branched, \$2.00; medium size, branched, \$1.50; small size, partly branched, \$1.00.

THE ORANGE.

Washington Navel. This variety has made California oranges famous the world over. It has been one of the most profitable from the grower's standpoint. The tree is a good, thrifty grower, making a well-rounded, uniform top; bears heavily and regularly. The fruit is large with a peculiar formation on the blossom end. Seedless, flesh meaty, tender, sweet and high-flavored; ripens early; good shipper; season from December to May.

Golden Nugget Navel. A new variety, in some respects superior to the Washington Navel. Fruit very smooth, solid and thin skinned; of fine texture, deep golden color; shape slightly oblong; of good size, seedless and finely flavored; good shipper and keeper. Tree moderate size; branches slender and willowy, rendering an umbrageous appearance.

Thompson's Improved Navel. Similar in character to the above; fruit ripens somewhat earlier; medium size, thin skinned, high color.

Ruby Blood. Medium size, nearly round; skin thin but tough; pulp rich and juicy; flesh streaked with blood-red. The tree is hardy, good grower and regular bearer.

Valencia. Tree strong and vigorous grower and prolific bearer. Fruit medium size, oblong, having few seeds; flavor sub-acid; ripens late and hangs well on the tree throughout the summer. The best late orange.

Paper Rind St. Michael. Tree strong and vigorous grower; very productive; fruit small

round; skin very thin and smooth, light color; pulp very juicy, sprightly, of fine quality; season medium, March to June; good shipper.

Kumquat. The Kin-Kan of Japan, meaning Gold Orange. Fruit very small, olive shaped; the rind is orange yellow and has a pleasant aroma; used by the Orientals for preserving. The tree is dwarf and ornamental.



The Kumquat.

Tangerine, Dancy's. This is the most popular of the Mandarin family; orange-red skin; pulp of best quality, not very seedy; rind separates readily from flesh; juicy, highly flavored; tree strong grower and very prolific.



Armstrong Orange Grove, showing method of irrigation.

Sutsuma (Oonshiu). Of medium size. Skin loose, deep yellow, segments easily separated; flesh fine grained, tender, juicy, sweet and delicious. Tree rather dwarf in habit; thornless; bears young and fruit ripens early.

having few seeds, A good keeper; tree thornless and a very heavy bearer. The variety most largely grown in this section. \$1.00 to \$1.50.

THE CITRON

Citron of Commerce. Fruit very large; similar in shape and color to a lemon, but very much larger; can only be grown in frostless locations; used for making candied citron peel. \$1.00.

POMELO OR GRAPE FRUIT.

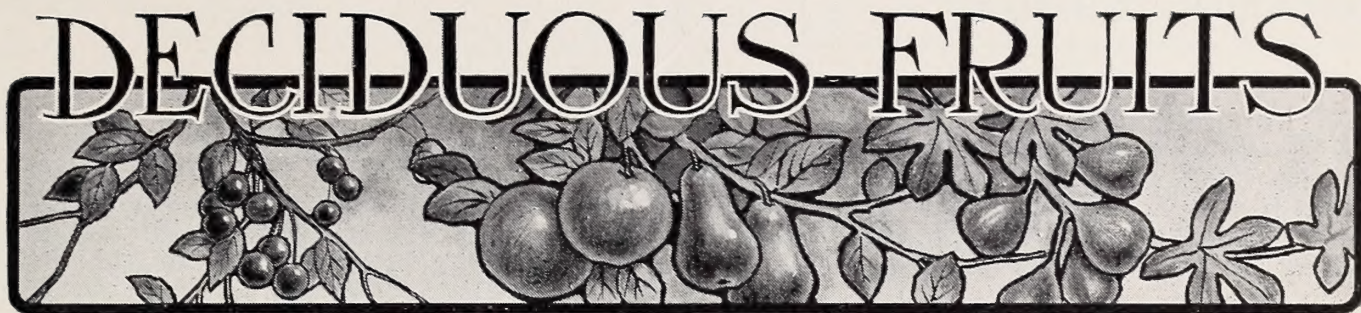
Marsh Seedless. The Grape Fruit is becoming more popular each season. For medicinal purposes it leads all other citrus fruits. We have now discarded all but the above variety, all the others contain so many seeds as to make them undesirable. Fruit is sound; much larger in size than the largest orange; pulp juicy, of rich piquant flavor; almost seedless; rind thin, color lemon yellow. \$1.00 to \$2.00.

THE LEMON.

Eureka. Originated in California. Fruit is medium size; smooth of excellent quality,



Marsh Seedless Pomelo.



THE PEACH.

The Peach is a standard fruit of great commercial importance. It succeeds well throughout the entire Pacific Slope, but thrives best in a deep sandy loam. To secure stocky, vigorous trees, prune the young stock low when first planted. The choice varieties described below allow a selection for any purpose required.

PRICES: Large size, 35c; medium size, 25c; special quotations on large quantities.

Admiral Dewey. Fruit of good size: skin deep orange-yellow, with crimson cheek; flesh clear yellow to the stone; juicy, melting, vinous; quality good. June,

Amsden June. Skin and flesh greenish-white; juicy and sweet, of fair quality; one of the earliest. June.

Angel. Large, roundish, slightly pointed; skin yellow, highly washed with red; exceedingly handsome; the flesh is white, melting, juicy, mildly sub-acid, and of exquisite flavor; freestone. July 1st.

Australian Saucer. Earliest of all to ripen. Flattened on both ends; pit and fruit small; flavor delicious and sweet. June.

Blood Cling. A peach of very good flavor. It is esteemed by many on account of the flesh being deeply colored.

California Cling. A fine late canning peach.

Champion. A large, handsome, early variety; creamy-white with red cheek; rich and juicy; productive. Ripens early in August.

Comet. Large, round. A fine late variety, ripening about two weeks later than the Salway, which it resembles. Very prolific.

Early Crawford. A well-known yellow peach of good quality; tree vigorous and prolific; in the past years this was the earliest peach, but now much earlier kinds are grown, July.

Early Imperial. Ripens about with Amsden, June; tree a strong, vigorous grower and yields abundantly; fruit good size with small pit; skin yellow, nearly covered with red, deep crimson in the sun; after fruiting this

variety for several years we can recommend it as being the best early yellow free-stone peach; a splendid shipper and the best for home use.

Elberta. Large, yellow, with red cheek; juicy, sweet and highly flavored; tree grows strong and healthy and very productive; very largely planted in Southern States; one of the best paying varieties for the Southwest. Ripens in August.

Foster. An excellent early peach, resembling Crawford's Early and ripening a few days earlier.

George the Fourth. Large, white, with red cheek; flesh pale, juicy and rich; a very popular table variety. End of August.

Hale's Early. A popular early variety; skin greenish, splashed with red; flesh white, juicy and sweet, Early in July.

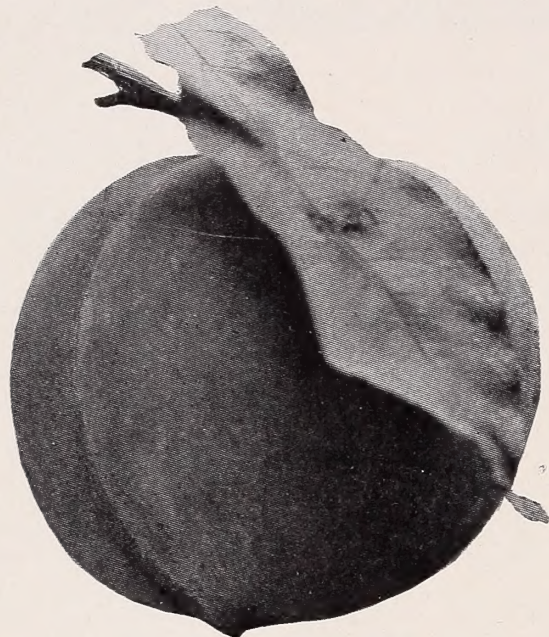
Large Early York. White, with a red cheek; large and fine, flesh juicy and delicious. Ripens in August.

Late Crawford. Large, yellow, with red cheek; flesh yellow, juicy and excellent; freestone; an old and popular variety. August.

Lemon Cling. One of the most popular of all the canning peaches; flesh firm, rich, and clear yellow to the pit; a heavy and regular bearer. Ripens in August.

Lewkins Honey. Medium size, oval; skin whitish-yellow, with blush on sunny side; flesh creamy-white, juicy and melting; very sweet with rich honeyed flavor; an excellent variety for eating out of hand or for table use. Early in August.

Lovell. Large and round; yellow to the pit; a splendid variety for canning and drying; similar to Muir; the tree, however, is a much stronger grower; a free and regular bearer. Ripens with Muir, or a few days later.



The Lovell Peach.

Morris White. Fruit large and oval; skin greenish-white, with creamy tinge when fully ripe; flesh white, firm, sweet and juicy. Early in August.

Mountain Rose. A handsome peach with red cheek; flesh white and juicy; one of the best. August.

Muir. Large yellow freestone; of excellent quality; flesh yellow clear through; pit small;

one of the most popular varieties for canning and especially adapted for drying; August.

Opulent. Originated by Mr. Luther Burbank; a peach of excellent quality for home use or nearby markets; extremely productive. Ripens medium early.

Pansy Pabor. An early peach of excellent quality; fruit of good size, yellow, juicy and of fine flavor. Much esteemed for home use.

Phillip's Cling. Fine, large, yellow; flesh firm, clear, yellow to the pit, which is small; flesh of finest texture. The best of all clings for canning purposes. Ripens in September.

Runyon's Orange Cling. Fruit very large, yellow with dark cheek; flesh golden-yellow, rich and sugary. For shipping and canning.

Sabichi Winter. Medium size, very late; flesh very white, juicy, sweet and melting, and excellent flavor; clings slightly to the pit; ripens November and December.

Salway. Large, round; skin creamy yellow; sweet and rich flavor; freestone; a valuable late sort; bears heavily and regularly; very popular. September.

Success. A very late peach of Texas origin, said to be of excellent quality. November and December.

Tuscan Cling. A fine early cling of excellent flavor; in good demand for both canning and shipping; ripens with Early Crawford.

White Heath Cling. Creamy white, blush on sunny side; flesh white, tender, juicy and delicious. September.

THE APRICOT.

The Apricot is one of the most delicious and richly flavored fruits we possess. Its earliness, ripening as it does before the Peach or Plum, make it very desirable. The conditions in California are well adapted to its culture, this being the only State in the Union in which it is grown in commercial quantities.

PRICES: Large size, 35c; medium size, 25c

Royal. Medium size; oval; skin brownish-yellow; flesh yellow, with sweet, rich, vinous flavor; exceedingly productive. The leading commercial apricot cultivated in California for canning and drying purposes on account of its productiveness and excellent quality. Ripens in July.

Newcastle Early. Medium sized, round; the best early variety; ripens two to three weeks before the Royal.

Moorpark. Large, greenish-yellow with red cheek; fruit of highest quality. Ripens later than the Royal.

The prices listed in this book cover only assorted orders; people in the market for commercial planting should write us for special quotations.

THE PLUM.

The varieties of Plums are being continually added to and improved. The Japanese Varieties and their seedlings are particularly suited to this climate. While the plum and the prune are the same, we classify them separately. The varieties called prunes can be used for other purposes but are grown commercially in large quantities for the dried product.



Combination. New Early Plum.

NEW VARIETIES.

Formosa. Fruit of great size, uniform, yellow with a pale bloom turning to a clear rich red. Flesh pale yellow, unusually firm, sweet and rich; delicious with a delightful apricot flavor; nearly freestone. Tree of luxuriant growth and unfailing prolificacy. 50c.

Gaviota. This new plum is recommended as being one of the very best of the latest varieties of table and shipping sorts. Fruit strikingly handsome, mostly deep reddish-purple when ripe. Flesh firm; honey-yellow, fragrant and sweet. 50c.

Plumcot. As the name indicates, it is a cross between the plum and the apricot. The flesh is a brilliant red and of sub-acid flavor, which renders it valuable for jellies, jams, preserving, etc. Fruit about the size of an apricot, with deep velvety skin. 50c.

Santa Rosa Plum. We consider this the best of the four new plums. The fruit is of a deep purplish crimson in color, the flesh being pale amber near the stone, shading to deep purplish crimson near the skin. The quality is unsurpassed and it is a valuable plum for both shipping and home uses. Ripens about two weeks earlier than the Burbank. The tree is a splendid grower and of excellent bearing qualities. Fruit of beautiful appearance and delicious flavor. 50c.

STANDARD PLUMS.

Large size, 35c. each; medium size, 25c.

Bartlett Plum. This variety is wonderfully productive. The tree and fruit resemble very closely the famous Bartlett Pear in habit of growth, flavor and fragrance. Fruit oval, yellow, turning to deep crimson when fully ripe; flesh light salmon, firm and juicy. Ripens before Burbank.

Burbank. Medium to large, round, having yellow dots and lilac bloom; flesh deep yellow, firm and meaty, with an agreeable flavor; tree vigorous and productive.

Climax. Very large, heart-shaped; color deep, dark red; flesh yellow, fine flavor and pleasing fragrance; tree vigorous and productive. A splendid early plum.

Clyman. A beautiful plum of medium to large size; skin mottled, reddish-purple with blue bloom; freestone; flesh firm and sweet; valuable on account of its earliness; tree heavy bearer and strong grower.

Combination. New early plum. A regular and abundant bearer of large fruit, nearly globular in form and uniform in size; flesh light yellow; tree a strong symmetrical grower.

Damson. Fruit small, oval; skin purple; flesh melting and juicy, rather tart. An old, well-known sort.

First Plum. A valuable new early variety. As its name indicates, it is the first plum to ripen. Fruit medium size, pale amber and half transparent; flesh same color, moderately firm, sweet and juicy; tree is of medium growth, and we have never seen it fail to produce an immense crop. For home use and near markets it is the most useful of all early plums.

Green Gage. One of the richest of plums. Medium size; round; skin tender; greenish-yellow.

Kelsey. Very large, heart-shaped; skin greenish-yellow, sometimes overspread with red when ripe, with a fine bloom; flesh yellow, meaty, firm, pleasant flavor; very prolific. August and September.

Normand's Yellow. An old prolific variety; fruit yellow; heart-shaped. Can always be depended upon for a good crop.

Prunus Pissardi. (Purple-leaved Plum.) The leaves of this plum are rich purple in color which it carries throughout the season. The plums are small and of a cherry flavor. The tree is very desirable for ornamental planting.

Prunus Simonii. (Simon Plum,) A distinct species from China; fruit large, flattened and a brick-red in color; flesh yellow with a particularly aromatic flavor.

Red June. Medium size, deep vermilion red; flesh light lemon yellow, firm and of pleasant quality; vigorous and productive. Late July.

Satsuma. Medium to large, round; skin dark-red; flesh dark blood-red, firm and solid; quality good; fine for canning.

Sultan. A very attractive variety of plum; large size; the skin deep purplish, and flesh crimson shaded with pink; tree is a rapid grower and very heavy bearer. Ripens early.



The Wickson Plum.

Wickson. Another of Burbank's creations, and the largest of all plums; similar in form to Kelsey; flesh firm, deep amber-yellow; a very handsome and finely flavored variety; valuable for canning and shipping

THE PRUNE.

By the term Prune is commonly signified a plum which dries successfully without the removal of the pit, and produces a sweet dried fruit.

PRICES: Large size, 35c; medium size, 25c.

French Prune. Medium size, oval; skin purple; flesh rich and very sweet; planted extensively for drying.

Hungarian. Large, oval; reddish-violet; sweet and juicy. Fine for home use and as a shipping plum.

Silver Prune. Almost identical with Coe's Golden Drop, of which it is supposed to be a seedling. Fruit of large size; skin light yellow; a valuable addition. Late September.

Sugar Prune. (New) This valuable new prune was originated by Mr. Luther Burbank. Fruit very large; skin tender, dark purple, covered with white bloom; flesh yellow, tender and sugary.

Tragedy. A valuable early variety; large, handsome; skin dark purple; flesh greenish-yellow; sweet and rich. Excellent for eating out of hand.

Always write us for quotations on large quantities.

THE NECTARINE.

The Nectarine is a most delicious fruit and requires the same culture as the peach, from which it differs by having a smooth skin like the plum.

PRICES: Large size, 35c; medium size, 25c.

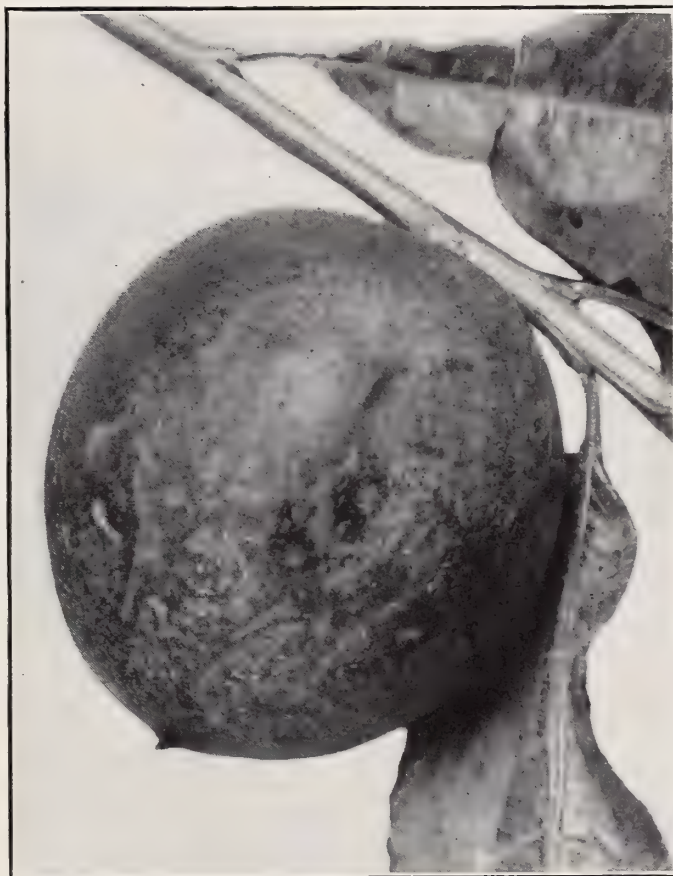
Advance. A valuable early variety ripening in July. Skin green, blotched with red and brown on sunny side; flesh greenish-white and sugary; fruit large and round, and of a delicate sub-acid flavor. Its earliness renders it desirable for either family or commercial culture. Season early July.

Boston. Large, bright yellow and red cheek; flesh yellow, sweet and pleasant flavor; freestone. The leading yellow-fleshed nectarine, Season late July.

Humboldt. A very superior sort. Very large; orange-yellow, blotched with red on sunny side; flesh orange, very tender and juicy. The only yellow nectarine except the Boston. Ripens early in August.

New White. The best white variety; flesh white and juicy; small pit, freestone; skin greenish white; tree of medium growth. Recommended by those who have grown it rather extensively as a good drying variety. Season July.

Stanwick. One of the leading varieties of Nectarines; large size; flesh white, tender, juicy and of delicious flavor; skin greenish white, shaded with reddish purple in the sun. A prime table variety, and especially to be commended for family use. Is recommended both for drying and shipping as a fresh fruit. Ripens August-September.



Stanwick Nectarine.

THE APPLE.

The apple is perhaps the most important of all fruits, owing to its general popularity and usefulness. By a judicious selection of varieties, ripe fruit may be had throughout the year.

We offer a variety of sorts which have proved themselves best adapted to conditions and climate of the Southwest.

PRICES: 25c each, \$2.00 per 10. Write for prices on quantities.

Arkansas Black. Medium to large; somewhat conical; the color is a beautiful dark maroon over a yellow ground; flesh firm, fine grained, juicy and a long keeper. December to April.

Bismark. One of the best apples for hot climates; fruit a beautiful golden yellow and of largest size; a grand desert apple. Ripens early and keeps well.

Chenango. (Chenango Strawberry) Large, oblong; red and yellow; very handsome. Valued as a table fruit on account of its fine appearance and high quality. September.

Delicious. (New) This fine variety gives evidence of being well worthy of culture; fruit large, handsome, striped red; of a delicate pleasant flavor.

Delaware Red. Large, roundish flat; mild sub-acid; beautiful dark red; a handsome late keeper; tree a vigorous grower and bears well. November to April.

Fall Pippin. Large, round, yellowish green; flesh tender, rich and delicious; very productive; one of the very best Fall apples; September.

Fameuse. (Snow Apple). Medium size, red streaked; flesh snowy white, tender, juicy and delicious; September to October.

Gloria Mundi. Very large; greenish yellow; flesh coarse, tender and of sub-acid flavor; excellent for cooking. October.

Gravenstein. A large striped, roundish apple of the best quality. August.

Grimes Golden. (Grimes Golden Pippin.) Medium to large size; skin golden yellow sprinkled with gray dots; flesh tender, juicy and crisp. Tree hardy and a good bearer: December to March.



Jonathan

Bellflower.

W. W. Pearmain.

Jonathan. Medium size, conical, yellow and red; flesh tender, juicy and rich; very productive; one of the very best early Winter apples; November to December.

Maiden Blush. Medium, pale yellow with red cheek; tender and sweet but not high flavored. August.

Missouri Pippin. (Stone's Eureka); Large, round, yellow splashed with red; a popular market sort; very productive, Nov. to April.

Newtown Pippin. One of the very best apples as to quality; tree a light grower while young; very juicy, crisp and highly delicious flavor; fine keeper. Does not succeed in all sections. December to May.

Red Astrachan. Large, nearly covered with deep crimson; handsome; juicy, with rich acid flavor; very productive; one of the very best Summer apples. July.

Rhode Island Greening. A well-known variety that succeeds well in the Southwest; fruit very large, round, sub-acid, rich flavor; ripens late in the Fall.

Red June. Medium size, oblong. Color deep red; one of the best table apples. June to July.

Rome Beauty. Large, yellow and bright red; handsome; a moderate grower and good bearer; very popular in California. November to February.

Sweet June. Fruit medium, roundish, regular; light yellow; very sweet, pleasant and rich.

Twenty-ounce Pippin. A very large showy, striped apple of good quality; flesh coarse but of pleasant flavor.

White Winter Pearmain. Medium, oblong, greenish-yellow; tender, juicy, highly flavored; good bearer; one of the leading varieties grown in California. November to July.

Winesap. Large, round, deep red; good quality; succeeds well in light sandy soil. November to February.

Winterstein. (New.) A seedling of Gravenstein, originated by Luther Burbank. It ripens with Baldwin and Rhode Island Greening; flesh yellowish, spicy, rich, sub-acid, of finest texture; color bright red, striped; tree vigorous and remarkably productive.

Winter Banana. Fruit very large, perfect in form, golden yellow, and beautifully shaded with red; flesh yellow, fine grained, sub-acid, rich aromatic flavor and of the highest quality. A good keeper. An early abundant bearer.

Yellow Bellflower. Large, yellow; flesh crisp, juicy, with a sprightly aromatic flavor; an excellent and valuable variety; tree a fine grower and a good bearer. The commercial variety in California, adapting itself to all portions of the country. October to February.

Transcendent Crab. The best of all the crabs for general use. Tree remarkably vigorous and immensely productive. Fruit large; skin yellow, striped with red. Fruit especially fine for preserves and jellies, being of a pleasing aromatic flavor. August.

THE CHERRY.

There are few finer fruits than the Cherry and in localities where they are fruitful there are few more profitable. The Black Tartarian and Royal Ann belong to the Heart and Bigarreau Class. Trees are of upright growth and are most fruitful along the foothills. The Early Richmond and English Morella differ from the preceding in that the trees are smaller and more bushy and are heavy bearers in almost any locality.

PRICES: Large size 35c; medium size 25c.

Black Tartarian. Very large; purplish-black; flavor mild and pleasant. The tree is a vigorous, upright grower.

Dyehouse. A very early and sure bearer; ripens a week before Richmond.

Early Richmond. An old favorite sort; an early red, sub-acid cherry; tree a fine grower, hardy, healthy and productive.

English Morella. Large dark red; tender, juicy, rich acid; later than Early Richmond; an excellent acid variety. This variety in our trial grounds has borne heavy successive crops for several years.

Royal Ann. (Napoleon Bigarreau). A magnificent cherry of the largest size; pale yellow with bright red cheek: flesh firm, juicy and sweet; trees an erect grower.

THE PEAR.

This most desirable fruit is seen at its best in California. The range of varieties is such that ripe fruit may be had from mid-summer to spring. The following sorts are selected with a view to giving the best results.

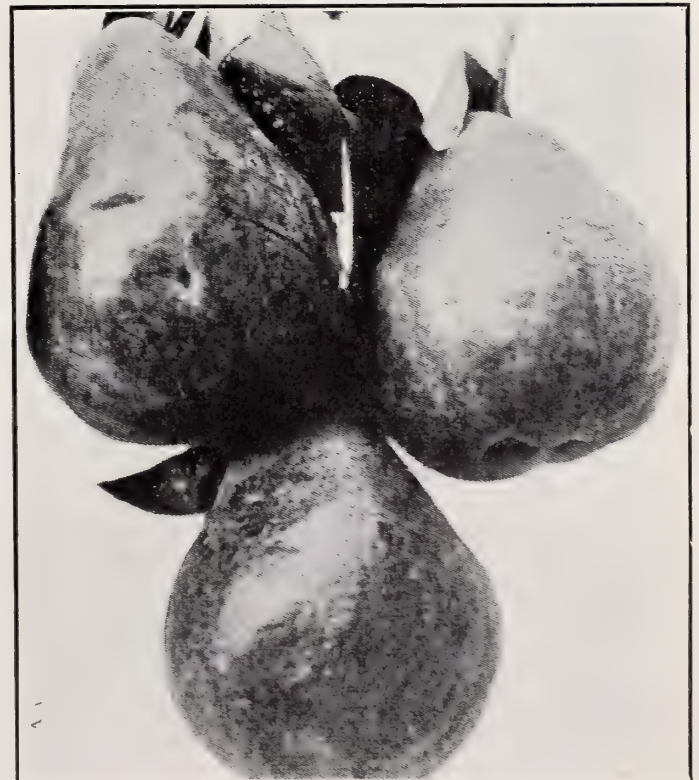
PRICES: Large size 35c. Medium size 25c.

Bartlett. One of the most popular varieties; large, buttery and melting, with rich musky flavor; tree a vigorous grower; bears abundantly; ripens early. No pear now on the market possesses a wider popularity, being a good shipper, possessing keeping qualities and fine appearance. Indeed, no variety is so extensively planted in California.

Clapps Favorite. A splendid summer pear, resembling the Bartlett and ripening a few days earlier. Tree is hardy and a vigorous grower. As with all varieties of pears (and especially with this) fruit should be picked at least ten days before it would ripen upon the tree.

Flemish Beauty. A large, beautiful, melting, sweet pear. Strong grower and fruitful; an old standard variety.

Winter Bartlett. (New). Large; skin yellow with blush; similar in form and quality to the Bartlett; ripens three or four months later.



Bartlett Pear

Winter Nelis. Medium size; dull russet; flesh melting and buttery with rich, sprightly flavor; tree a slender irregular but free grower; bears heavily and regularly; one of the best early winter pears.

Worden Seckel. A seedling of the Seckel. Fruit medium size, borne in clusters, juicy and fine grained; flavor fully equal to that of its parent, which it surpasses in size and keeping qualities.

THE QUINCE.

This fruit is desirable for preserving and forms a valuable adjunct to the garden.

PRICE: 30c.

Apple or Orange. Large, roundish, with short neck; greenish-yellow color. This is the variety most largely cultivated.

Reas Mammoth. A very large, fine variety of the orange quince; a good grower and quite prolific; one of the best,

Pineapple. (New) The name is suggested by the flavor. The fruit resembles the Orange Quince but is smoother and more globular.

Smyrna. The fruit of this superb new variety is very large and of a lively, lemon-yellow color; tender and delicious when cooked.

THE FIG.

PRICES: Large size. 35c; medium size, 25c.



California Black Fig.

Among California fruits the fig has always occupied a foremost position; the early Mission fathers invariably possessed a few trees in their gardens. It was not, however, until the eighties that the fig culture assumed commercial importance, neither did it attain full success until about 1898. Since these events the fig culture has attained great success and no garden is complete without a few trees.

Calimyrna (Smyrna). The genuine commercial Smyrna fig as grown in Asia Minor. Large size; skin lemon-yellow; pulp reddish-amber; flavor and quality unsurpassed. For growing this variety successfully, it is necessary to have the aid of the Fig Wasp (*Blastophaga Grossorum*). These minute insects dwell in the wild or Capri Figs, and convey the pollen into the edible fig.

Capri. The wild fig which must be grown in connection with the Smyrna Fig, the ratio being two Capri trees to an acre of Smyrnas,

Mission. The well-known California Black fig, one of the finest figs for home use; fruit does not sour on the trees, as is the case with some varieties; tree a strong grower and prolific.

White Datato. A late variety of excellent quality.

White Adriatic. Large, skin greenish-yellow; flesh reddish; tree strong grower and prolific; largely planted in California.

White Pacific. Greenish-yellow skin; pulp sweet, of excellent quality and light yellow in color; a regular and heavy bearer. Fruit medium to large size.

THE JAPANESE PERSIMMON.

A superb fruit that is growing rapidly in popular esteem. It can be grown very successfully in all parts of California and the Southwest. The following are the best of the large number of varieties we have fruiting on our grounds.

PRICES: Large size, 50c; medium size, 35c.

Hachiya. Large, oblong, conical; $3\frac{1}{2}$ in. longitudinally and $3\frac{1}{2}$ in. transversely; skin dark, bright red; flesh yellow, with some dark streaks and few seeds; astringent until ripe.

Hyakume. Large to very large, roundish oval, flattened at both ends; skin light buffish yellow; flesh dark brown, sweet, crisp, meaty; not astringent but good while yet hard; $2\frac{3}{4}$ in. longitudinally $3\frac{1}{8}$ in. transversely.

Tane-Nashi. Large to very large, roundish conical, pointed, very smooth and symmetrical;

diameter $3\frac{1}{4}$ in. longitudinally and $3\frac{3}{8}$ in. transversely; skin light yellow, changing to bright red at full maturity; flesh yellow and seedless; quality very fine; perhaps the most highly esteemed of the light-fleshed kinds; tree is vigorous and bears well.

THE MULBERRY.

Downing's Everbearing. A very strong, upright grower, producing fruit of good quality. A splendid shade tree. 50c.

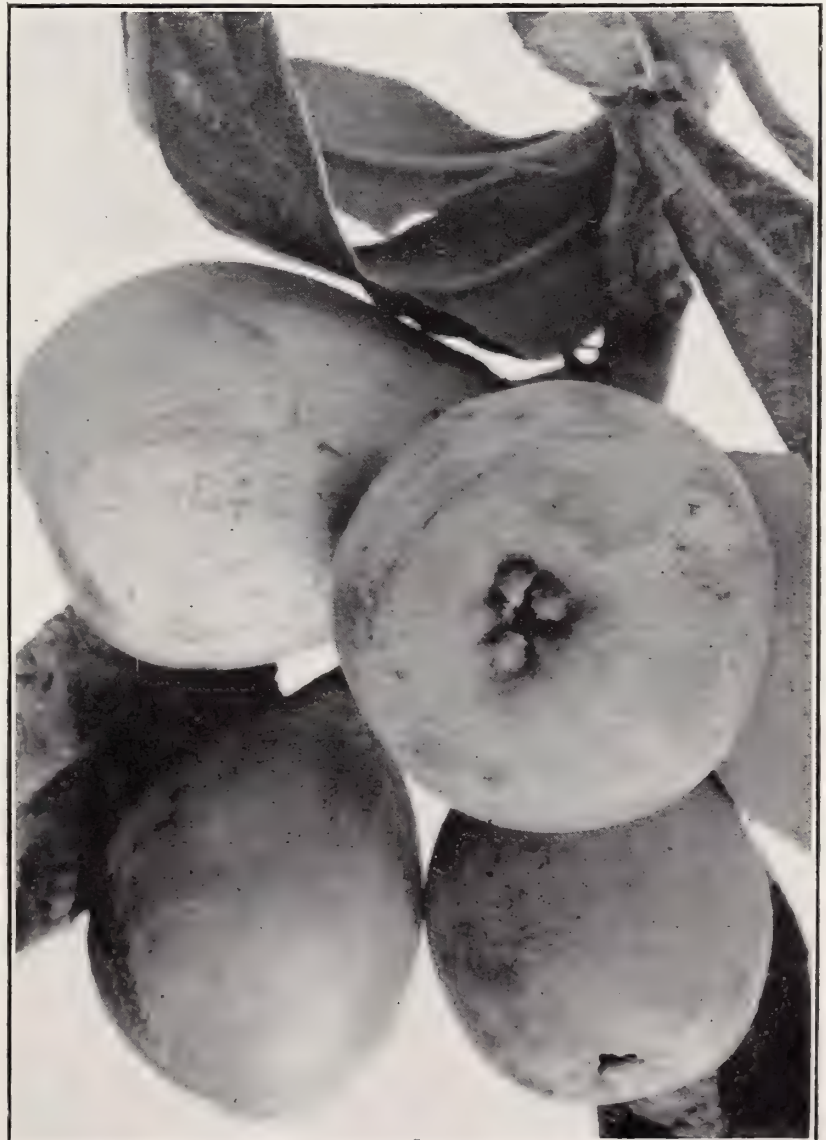
THE LOQUAT.

The Loquat is a fruit which is commanding wider attention as it becomes better known. The tree is of itself one of the most beautiful, single specimens often gracing our front yards and finding conspicuous places on the lawn. It is an evergreen, with large glaucous leaves, while the fruit is pear shaped, light orange in color, and of an acidulous-aromatic flavor. One of the earliest fruits to ripen.

Advance. (New). One of the best of the grafted sorts; fruit pear shape; borne in large clusters; color orange-yellow; flavor distinct and delightfully sub-acid. \$1.00.

Premier. (New). Another grafted sort well worthy of cultivation. Fruit large, oval, flattened on both ends. Color lemon-yellow; of pleasant flavor, rather sweeter than the Advance. \$1.00.

Seedling. Grown from selected seed; forms a larger tree than the Advance but the fruit is somewhat smaller and the tree is later coming into bearing. 50c to 75c.



Advance Loquat

THE POMEGRANATE.

The Pomgranate is a fine large shrub, hardy and easily grown. Its brilliant scarlet flowers are very ornamental and the fruit is much esteemed for its fresh crispness and delicacy of flavor.

Paper Shell (New). As the name indicates, this is a thin-skinned variety of excellent quality. 35c.

Wonderful. (New). Large, highly colored; the pulp is richly colored, of good flavor; very fine; ripens late. 35c.

THE AVOCADO.

Persia Gratissima. (Avocado or Alligator Pear). This fine tropical fruit is a native of the West Indies and Mexico to Peru. The fruit is very large, pear shaped, covered by a green or purple skin containing a large quantity of firm, yellowish-green pulp, enclosing a single seed. The pulp is marrow-like and is eaten as a salad. The tree is a fast grower and attains a height of 20 to 30 feet, Rather susceptible to frost. \$1.00.

THE CUSTARD APPLE.

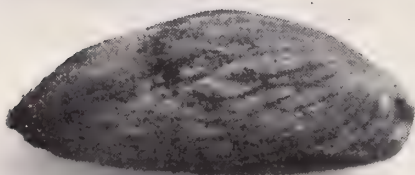
Cherimoya. One of the finest of sub-tropical fruits. Tree grows to be as large as the Orange, producing large-sized, heart-shaped fruit in great numbers. Color grayish-brown. Pulp of a custard-like consistency. Tree rather susceptible to frost. \$1.00.

THE FEIJOA.

Feijoa Sellowiana. A beautiful shrub, producing a profusion of charming flowers, which later give way to a most delicious and aromatic fruit, somewhat resembling the guava, but having smaller seeds. The first plants were brought from Uruguay about eight years ago and are now fruiting in Southern California. 75c.

THE NUT FRUITS.

The nut fruits have proved themselves adapted to California conditions. Besides their culture in a commercial way, they are quite suitable for planting about the home, where they furnish shade, as well as nuts for family use.



Jordan Almond.

THE ALMOND.

Jordan. The largest, sweetest and finest-flavored of all the almonds. The kernels are long, plump and thin-skinned; rich flavored and of fine texture. The Jordan has recently

been introduced from Spain, where it is highly prized, the demand being greatly in advance of the supply. 40c.

Nonpariel. A popular sort; shell thin, quality good; tree of a somewhat weeping habit; bears heavy and regular. 35c.

I. X. L. Nut large, generally single kernels; soft shell; tree a strong upright grower; one of the most popular varieties of almonds. 35c.

THE CHESTNUT.

Italian or Spanish. Large fine nut; tree very ornamental. 50c.

Japan Mammoth. Nut very large; tree bears when quite young. 50c.

THE WALNUT.

Placentia Perfection. The favorite soft shelled walnut in Southern California. The nut is large, round and uniform, of excellent quality. Tree vigorous grower. Usually begins to bear the second or third year after planting. Our seedling trees are grown from choice selected seed, 25c to 75c; grafted trees, \$1.00 each.



THE GRAPE.

Among fruits, grapes are perhaps the most certain. In Southern California grape culture has attained great importance, the raisin, table and wine varieties occupying an immense acreage representing large investments. Our assortment is selected with a special view of meeting general requirements both for home as well as commercial culture. No home garden is quite complete without a few choice table sorts lending an air of comfort when trained over trellis or arbor.

FOREIGN VARIETIES.

The leading sorts for table use, raisins, wine making and shipping.
 PRICES: 15c each; \$1.00 per 12; \$4.00 per 100.

Almeria. Bunches large, loose; berry large, oval, yellowish green. This variety is grown extensively in Spain and exported to America packed in cork dust. Medium late.

Black Cornichon. Bunches long and loose, berries oval; skin thick, covered with bloom; firm, good quality; one of the best late shipping grapes.

Black Morocco. Berries very large, oval; purplish black when ripe; flesh firm, sweet and crisp; bunches medium to large, compact; an excellent late shipping grape.

Cinsaut. Excellent as either a wine or table grape; berries large, black and oval shape; crisp and of fine flavor. Medium early.

Emperor. Bunches large, long and rather loose; berry large, oblate, wine colored, very firm; a very late variety, and considered one of the best for shipping.

Flaming Tokay. Bunches and berries very large, pale red with bloom; flesh firm and sweet; a handsome grape and a good shipper.

Golden Chasselas. The berries of this variety are of a rich amber color, sweet and juicy. Bunches medium size and compact. Ripens latter part of July.

Golden Queen. The fruit of this variety is large and oblong; rich flavor; color golden yellow when fully ripe. Much esteemed as a table grape. Medium late.

Gros Colman. Berries of this variety are as large as small plums, and are borne in immense clusters. Skin thin, very dark and covered with bloom; flesh firm, pleasant flavor. A very excellent table variety. Ripens late.



Flaming Tokay. Berry natural size.

Malaga. One of the best table grapes; vine a strong grower, and very productive; bunches very large, compact; berry large, oval, yellowish-green; fleshy.

Thompson Seedless. Oval, greenish yellow; as large or larger than Sultana; seedless; thin skinned; good, but not strong flavor; bunches very large. Valuable for either table use or seedless raisins. Ripens early.

Mission. Berries medium, round, black; bunches large, loose, sweet; an old standard variety; table and wine.

Muscat of Alexandria. The white raisin grape planted so extensively in California; bunches large and loose; berry oval; muscat flavor; one of the richest flavored of all grapes; valuable for raisins, shipping and wine.

Muscatallo Fino. (Black Muscat). An excellent table grape; berries very large; skin well colored, thin but tough; flesh soft and juicy with delicate Muscat aroma. Rather late.

Olivette de Cadanet. Bunches large; berry very large, oval and greenish-yellow; crisp, juicy and of good quality; a good table grape. Medium late.

Purple Damascus. Fruit is very large; deep purple when fully ripe; flesh meaty; bunches large and loose. Very desirable for table use. Ripens mid-season.

Rose of Peru. Bunches large and loose; berries round and firm; a popular variety.

Seedless Sultana. Berries small, round, firm and crisp; golden yellow and without seeds; bunches very large and long. Vine vigorous grower and prolific bearer; largely planted for seedless raisins and popular as a table fruit.

HARDY AMERICAN VARIETIES.

This class of grapes succeeds well here and are especially adapted for arbors.

PRICES: 15c each; \$1.50 per 12, except where otherwise noted.

Brilliant. An excellent early variety. Clusters open to compact; berries large, globular, light to dark red, translucent with a thin bloom; pulp meaty and tender, melting and delicious. Vine a hardy and vigorous grower.

Campbell's Early. A fine new grape raised by the late George W. Campbell of Delaware, Ohio. Clusters large and handsome; berries large, black, with light purple bloom; flesh rather firm but tender; the seeds are few and easily separated from the pulp; quality rich, sweet, slightly vinous. A good grower with healthy foliage. Ripens early. 20c; \$2.00 per dozen.

Catawaba. Bunches round and loose; berries large, coppery red color, vinous and rich.

Concord. Undoubtedly the most widely known and popular of all the native grapes. The vine is a healthy vigorous grower, and being hardy it succeeds where the more tender foreign varieties fail. Produces large clusters of berries of good size and of a quality unsurpassed for their buttery sweetness and musky

flavor. Color black, covered with thick bluish bloom.

Delaware. Bunches are small and compact; berries small; light red with a violet bloom; sweet, sugary and vinous, with a musky aroma.

McPike. Said to be a seedling of Worden; of great size. A very fine new variety. Ripens just before Concord.

Moore's Diamond. Leading early white grape; white, with rich yellow tinge; juicy, few seeds, almost free from pulp, excellent quality; above medium size.

Niagara. Fruit large; bunch medium compact; skin thin but tough, pale yellow with whitish bloom; flesh tender and sweet; vine healthy and productive; ripens with Concord. Considered the best hardy white grape in cultivation.

Worden. Bunch large, compact; berries larger than the Concord, which it resembles, ripening a few days earlier, and is superior to it in flavor.

THE OLIVE.

The growing of the Olive is now an established industry in California. The pickled Olive is a delicacy much sought, the demand being greater than the supply. The tree succeeds in almost any good soil and with proper care will increase in fruitfulness each season.

PRICES: Large size, 50c each; \$4.00 per, 10; medium size, 35c each; \$3.00 per 10.

Manzanillo. This fine Spanish variety succeeds well in California; it is one of the very best olives for pickling, and produces an oil of finest quality; fruit very large, purplish black, with light colored specks; tree a free grower and regular bearer.

Nevadillo. Fruit small to medium, purplish black when fully ripe; a fine oil olive; it also makes a well flavored pickle, but owing to its smaller size is not as popular for this purpose as the preceding variety; tree of strongest growth and a very heavy bearer.

MISCELLANEOUS FRUITS

THE SMALL FRUITS.

The following list of small fruits embraces the leading varieties for family and commercial culture. All our plants are grown by us, and hence are true to name, well grown and thrifty.

THE GUAVA.

The Guava is much sought for jelly making and preserving, and is much relished eaten out of the hand when fully ripe.

berries; round, deep reddish color; the fruit is highly prized. From 2 to 6 plants of this luscious, semi-tropic fruit will be a valuable addition to any home garden. 25c to 50c.

THE DEWBERRY.

The Gardena Dewberry. This grand berry has proven to be a great success. It is wonderful to see the vines literally covered with the large, jet black berries. The points in its favor are: Early ripening and productiveness. As an early market berry it is a sure winner. No fruit or family garden can be considered complete without at least a few Dewberry plants in the general assortment. 10c; 50c per 12; \$2.50 per hundred.



Mammoth Blackberry.
One-half natural size.

Lemon Guava. One of the finest of the Guava family; large pear-shaped, yellowish fruit; the bush is susceptible to frost and should be grown only in the most favored locations. 35c.

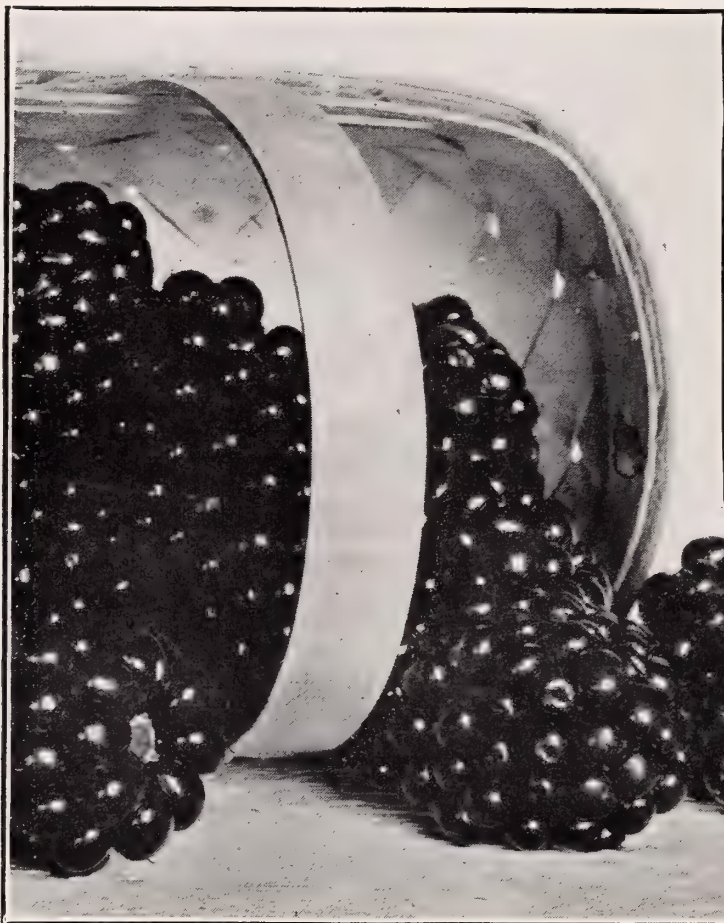
The Strawberry Guava. A fine, glossy-leaved shrub or small tree, which produces in abundance fruit about the size of large straw-



Strawberry Guava.

THE BLACKBERRY.

Mammoth. Said to be a cross between the wild blackberry of California and Crandall's Early. It is a rampant grower, sometimes attaining a growth of 20 feet in one season. The foliage is heavy and of a deep green color. The fruit is very large and long. Surpassing all other blackberries in size and flavor. Early and very productive. 15c; 75c per dozen; \$5.00 per hundred.



Gardena Dewberry.

Crandall's Early Blackberry. Large, firm, good flavor; fruits through the entire season; ripens early. 10c each; 50c per 12; \$3. per 100.

Himalaya Giant. A very strong grower, canes sometimes reaching 40 feet. Train on trellis. Fruit large and black. 15c; 75c per 12.

THE RASPBERRY.

Cuthbert. The best of the red raspberries; large, conical; deep crimson; firm and best flavor. 50c per 12; \$2.50 per hundred.

Golden Queen. Large; beautiful golden-yellow color; firm and of finest quality; plant vigorous, hardy and remarkably productive. One of the most delicious berries for table use. 75c per dozen; \$5.00 per hundred.

Kansas Black Cap. A valuable Black Cap Raspberry bearing large clusters of good-sized fruit. 10c each; 50c per 12; \$2.50 per hundred.

Surprise Raspberry. A valuable new Raspberry, remarkable for its fine quality and early ripening, of large size, similar in form and color to the Cuthbert; begins to ripen in April, continuing through the entire berry season. In fact, the earliest berry of all to ripen; of strong growth. 15c each; \$1.00 per 12.

THE STRAWBERRY.

20c for 12; 75c per hundred;
\$5.00 per thousand.

A-1. Ripens from early to late. A sure and continuous bearer. large, dark red when ripe; exceedingly prolific. We recommend this as the best all-around strawberry grown.

Brandywine. A good shipping variety. possessing many good points in its favor. A California production; glossy red berries; firm and of excellent quality; ripens mid-season to late.



Arizona Everbearing. A very large, handsome berry; vigorous grower; endures heat of summer well; very productive.

THE LOGANBERRY.

The Loganberry. A California production, being a hybrid between the wild California Blackberry and the Red Antwerp Raspberry. Color rich purplish red with a very pleasant vinous flavor. The best results are obtained by growing on a low trellis. During the dormant season the old last-year vines may be cut off, leaving the new canes for the next crop. May be planted in rows seven to eight feet apart, and six to eight feet in the row. 10c each; 50c per 12; \$2.50 per hundred.

THE GOOSEBERRIES.

Houghton. Vigorous grower; branches rather slender; very productive; not subject to mildew. Fruit of medium size; skin smooth, pale red; flesh tender and good. 25c; \$2.00 per 12.

Downing. A seedling of Houghton. Fruit large; whitish-green; flesh soft, juicy and good; plant vigorous and prolific; excellent for family use. An old standard variety, well and favorably known throughout the East. 25c; \$2.00 per 12.

VEGETABLE GARDEN.

We do not handle garden seeds, but aim to keep a few varieties that are usually bought in plants, roots or tubers, of which the following is a brief list.

THE RHUBARB.

Crimson Winter. The greatest value of this Rhubarb lies in the fact that it continues to grow through the winter season, when the old-fashioned sorts are dormant. Of vigorous growth, producing numerous, medium-sized stalks during the entire winter season. 20c; \$1.00 per 12; \$5.00 per hundred.

Monarch or Giant. An old standard sort; very large stalk; excellent for early summer use; tender and fine. 10c; 75c per 12.

Victoria. Very large; extensively used by market gardeners for main crop late in summer. 10c; 75c per 12.

THE ASPARAGUS.

Barr's Mammoth. A well-flavored productive variety. Large and tender. 10c; 35c per 12. \$2.00 per hundred.

Conover's Colossal. A mammoth variety of vigorous growth, sending up from fifteen to twenty sprouts each year. 10c; 35c per 12; \$2.00 per hundred.

THE TOMATO.

PRICES: 20c per 12; transplanted in boxes, \$1.00 per hundred. Ready in March.

Beefsteak. Fruit large, rich and meaty.

Earliana. The best early tomato.

New Stone. The favorite variety for shipping and canning; large, smooth and solid.

Ponderosa. Of enormous size, smooth and solid.

HORSE RADISH.

Horse Radish. This pungent vegetable may be easily grown by cutting up the roots in small pieces, saving the eyes; plant in rows 18 in. apart. 5c each, 25c per 12; \$1.50 per 100.



Crimson Winter Rhubarb.

SWEET POTATO PLANTS.

White Spanish. Very large, white and mealy.

Yellow Nansemond. Medium size, yellow; the leading market variety. 50c per 100. Ready in March.

NOTE: — Tomato and Sweet Potato plants ready in March.



In every State in the Union growers acknowledge the supremacy of California field-grown roses. For constitution, root development, vigor of habit and profusion of bloom they have no equals. Roses grown by us reach the same development in a single year that it takes two years to accomplish in the East.

Our many years' experience in this line warrants us in presenting our stock as of superior quality and second to none. Therefore, by purchasing direct from the producer, you get your plants fresh from the soil, and in perfect condition.

If fifteen per cent. is added to price of roses we prepay Express charges. This applies to roses only.

Unpacking Roses. Should plants, when received, have a withered appearance, caused by an unusual delay in transit (which seldom occurs), soak them in water for an hour or more so as to restore their vitality.

How to Plant. The rose delights in an open, airy situation; all types are partial to clay loam, but will succeed in any ordinary soil if enriched with well rotted barnyard manure. Dig up the soil thoroughly to a depth of twelve or fifteen inches. When the bush is planted press the soil firmly over the roots. Make a basin around the plant, and water freely to exclude air and to settle the earth.

Pruning. This operation is best performed during the dormant season. Most roses do better if moderately pruned. We usually remove from one-third to two-thirds of the past year's growth, and all weak or decayed wood should be entirely cut out. As a rule the more vigorous the variety the less it should be pruned. Besides Spring pruning, many of the Hybrid Perpetuals require to be pruned as soon as their first blossoming is over, in order to grow new wood for later blooming. It is always the new growth which gives flowers. Most people are apt to prune too sparingly, which retards rather than enhances the free-blooming of their plants.

THE NEW ROSES.

The following are the cream of recent introductions. All have unusual merit.

Alice Roosevelt. A sport from Mme. Chatenay, of the brilliant color of Bon Silene, red in the bud, deep pink when open; a fine bedder and good bloomer. 50c.

Betty, H. T. Blooms extremely large, fairly full, fine form, delicately perfumed, free in bloom. Yellow shaded golden rose. 50c.

Catherine Zeimet. The newest addition to the Baby Ramblers. Grows to a height of 20 inches and produces small, double white flowers in abundance; of free, compact growth; foliage of fresh clean appearance. 50c.

Frau Carl Druschki. This new hardy white rose is unquestionably the best in its class and color. The plant is remarkably handsome with bright, heavy foliage and strong upright growth. Its flowers are perfect in form and snow-white in color, with large shell-shaped petals. 50c.

Mrs. Jardine, H. T. Color bright rosy pink, shading to salmon-pink on the outer petals and holding its bright color at all times; has been thoroughly tested and won numerous prizes at the autumn shows. Destined to be exceedingly popular. 50c.

Rhea Reid, H. P. Here is a new rose which seems to possess every virtue. It is as large as American Beauty and double as Bridesmaid. Has the fragrance of LaFrance, and blooms as continuous as Bride, flowers are produced on long canes and are as red as Richmond; of very rapid growth and good constitution. 50c.

White Killarney. The counterpart of Killarney, from which it is a sport. It shows the same vigorous habit of growth. The buds are large, long and snow-white; a popular favorite. 50c.

The Pink Cherokee Rose. (*Rosa Laevigata*, var. *Anemone*). This exquisitely graceful rose novelty is a form of the well known White Cherokee. It has every desirable quality of the latter as regards the beautiful shining foliage, which holds the year round, and vigor of growth. The flowers are a lovely salmon rose color with a circle of golden stamens, producing a charming effect in contrast with the dark green foliage. The Pink Cherokee blooms more freely than the White Cherokee and presents a display in the spring and fall unapproachable for delightful freshness and rosy fragrance. Charmingly effective for pergolas, clinging on fences and arbors and for covering banks and terraces. A meritorious addition to the garden, adapted to California, Arizona and all milder sections of the country. Mildew proof. We can with confidence recommend this rose as well worthy of a place in every garden. 50c each ; \$4.00 per 12.



Pink Cherokee.

THE EVERBLOOMING TEA ROSES.

This is a very popular class of roses on account of its free blooming qualities, persistent foliage and wide range of color. Following are field-grown on their own roots.

PRICE. 25c each; \$2.50 per doz.; \$20.00 per 100.

Bridesmaid. Rich, clear pink; a well-known and popular variety.

Bride. Pure white, sometimes delicately tinged with pink; large, fine form, fragrant, free bloomer; one of the most popular of white roses.

Bougere. Bronzed pink; large and full; an old hardy variety; very popular.

Catherine Mermet. Color, clear shining pink, center shaded with amber and fawn; large globular flowers; a strong, healthy grower and splendid bloomer; an old standard sort that still retains its popularity.

Comtesse de Frigneuse. Delicate canary yellow; large, full, well formed; bud long and pointed; free flowering; a beauty.

Cornelia Cook. A free-blooming white rose of good quality; buds large and double. An old time favorite.

Coquette de Lyon. A lovely shade of light yellow; buds handsome; free bloomer.

Comtesse Risa du Parc. Color bright, coppery rose. It grows quickly into a large strong bush and is a remarkably free bloomer. Carries its foliage well and altogether is a fine rose.

Devoniensis. A famous old favorite of great beauty. Grows well anywhere. Carries an abundance of beautiful flowers throughout the season. The flower is of a beautiful creamy white with rosy center, large, double and very fragrant. There is no other variety like it and none more desirable. Should be in every garden.

Golden Gate. (*White House Rose*). A large, full and finely formed rose, with long, beautiful buds, color rich creamy white, tinged with golden yellow and clear rose, making a flower of great beauty.

Helen Good. The color of this new rose is a delicate yellow suffused with pink, each petal edged deeper. A vigorous sport from Maman Cochet. The flower is very large and of excellent form.

Duchess de Brabant. Soft light rose; blooms in great profusion almost the year round; very strong grower; a very satisfactory variety.

Homer. Salmon rose; free bloomer, half hardy; buds beautiful, medium in size and of variable shades.

Isabella Sprunt. Color bright canary yellow; with a sweet tea scent; beautiful buds; very desirable for cut flowers.

Lady oberts. An English rose of very vigorous growth; a magnificent bud; flower large, full, of exquisite form; color reddish apricot, shaded coppery-red; a charming new rose.

Laurette. Creamy white, shaded rose; an old garden favorite; a strong grower and free bloomer.

Luciole. Flowers extra large, somewhat cup-shaped, but quite full and double. Color cherry-red with golden-yellow center, beautifully shaded and very fragrant.

Mme. Hoste. Color creamy yellow with amber center; flowers large, fully formed; prolific bloomer and vigorous grower; one of the best light yellow roses.

Mme. Jos. Schwartz

The large globular flowers are pure white, tinged with pale yellow and rosy blush; large, constant and profuse bloomer; bush of strong growth.

Mme. Francisca Kruger. A very satisfactory rose for open ground culture. Strikingly handsome and especially adapted to bedding, as it holds its foliage under all sorts of conditions. Flowers deep coppery yellow and of large size; a strong and vigorous grower.

Mme. Lombard. Color a beautiful shade of rose, passing to salmon and fawn; of vigorous habit and growth. A first class rose for bedding.



Marie Van Houtte.

Maman Cochet.

Clear, rich pink; flower of great substance; a vigorous grower; with pretty foliage; the finest of all pink Tea Roses for open ground culture.

Marie Van Houtte.

For outdoor culture this beautiful rose cannot be excelled by any of its color; the flowers are large and full, the color pale yellow shading to creamy white and tinged with pale rose; bush is a sturdy grower and a free bloomer.

Marquis de Querhoent.

Color beautiful China rose, salmon and yellow; a clean, strong grower and persistent bloomer; a beautiful rose.

Papa Gontier.

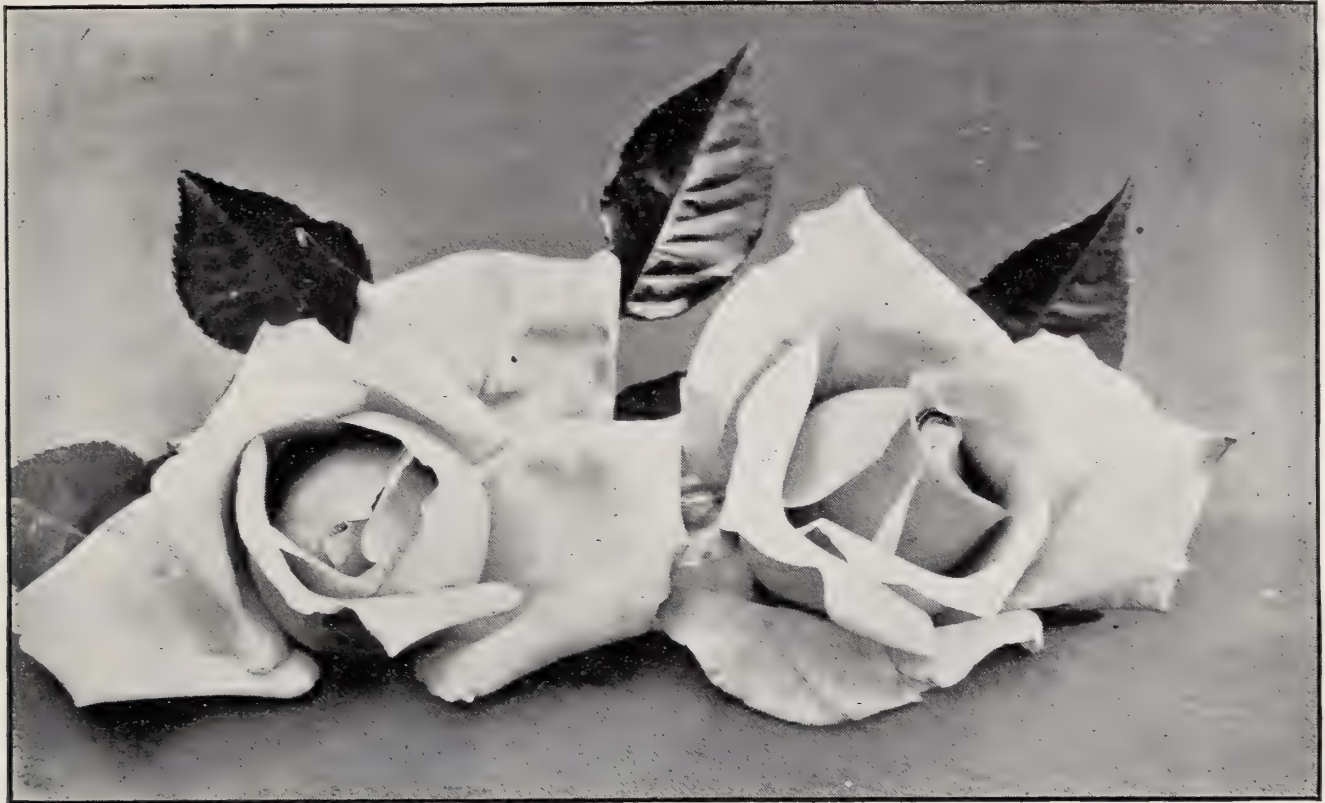
This is probably the most popular red rose in the whole list; the bush, which is of strong growth, and is always furnished with an abundance of healthy foliage and is an incessant bloomer; it is much sought after for cut flowers on account of its magnificent buds; color, rich cherry red; no collection is complete without it.

Perle des Jardines.

(Pearl of the Garden). This grand old rose still maintains its popu-

larity and is known as one of the best of its color; the flowers are large and full; clear golden yellow; succeeds well in open ground.

Rainbow. The habit of growth and form of the flower is similar to Papa Gontier; color, pink, striped crimson, center amber. A pretty rose.



White Maman Cochet.

Red Cochet. Identical with Pink Cochet except color; buds are beautiful reddish shade.

Safrano. Saffron and apricot yellow, semi-double; beautiful in bud; fine for cut flowers.

Sunset. The color is a rich golden amber or old gold; the buds and flowers are large and full; a great favorite wherever known.

Valle de Chamounix. An elegant rose; the color is variable from rich coppery yellow to

rosy blush; the buds are exceedingly pretty, full and sweet, and quite distinct from any other rose; it ought to be in every collection.

White Maman Cochet. This grand rose has proven to be the very best of white bedders; flowers of mammoth size, round and full; pure white throughout; a general favorite wherever known; identical with Maman Cochet, except in color, both of which are exceptionally fine roses for general culture.

THE HYBRID TEA ROSES.

This class of Roses combines, to a degree, the qualities of the Tea Rose and the Hybrid Perpetual, being free blooming like the Teas and quite hardy, and many of them richly colored and sweet scented like the Hybrid Perpetuals.

PRICE: 25c each; \$2.50 per 12; \$20.00 per 100.

Admiral Dewey. A sport from Caroline Testout; color, delicate blush pink; globular, expanding into a full flower without showing its center; more vigorous than its parent, and very free flowering.

Aurora. One of the grandest and most fragrant of all the Hybrid Tea Roses. Color clear, bright pink; full and double to the center; a gem.

Bessie Brown. White, sometimes faintly flushed pink; a rose of transcendent beauty; one of the largest and fullest we have ever seen; an erect and vigorous grower, flowering profusely all summer.

Clara Watson. Salmon, tinted pink; a profuse bloomer and a valuable rose for cutting; a desirable sort for any collection.

Defiance. A red bedder; color crimson-scarlet; full and of large size; very free in bloom.

Duchess of Albany. (Red Lafrance). Rosy pink; very large and double; fragrant.

Etoile de France. A charming new French Hybrid Tea Rose that aspires to a leading place among the reds. Thus far certainly promises well, has large fine buds borne singly on long, stiff stems; dark crimson in color, center vivid cerise; fragrant and lasting; vigorous in growth, soon forming a fine upright bush with few thorns.

General McArthur. One of the most magnificent roses of recent introduction. Of remarkably strong growth and good habit. The bud and open flower are brightest crimson and retain their coloring until they drop their petals. Blooms continuously and profusely and flowers are large size and very fragrant.

Gruss an Teplitz. The reddest of roses, bright scarlet shading to velvety crimson; as a bedding rose this is one of the finest and most useful varieties ever sent out; a free grower and most profuse bloomer of any everblooming rose; the mass of color produced is simply wonderful; the foliage is very beautiful, all the younger growth being a bronzy plum color; a clean strong grower; blooms through the entire summer.

Helen Gould. This is a most beautiful and satisfactory rose for outdoor culture; it is a cross between Kaiserin and Testout and possesses many of the good qualities of both; color bright glowing carmine; bud long and elegantly pointed, full and perfectly double; fine grower and constant bloomer.

Kaiserin Augusta Victoria. Pure ivory white; the grandest of all white roses; is a strong grower, producing buds and flowers of enormous size; a grand garden rose, and the finest of all for cut flowers; no lover of roses can afford to be without it.

Killarney. A grand new Irish rose of sterling quality; the buds are long and pointed;

color a soft shade of pink; handsome in both bud and full blown flower; a true everbloomer and a vigorous upright grower.

Lady Battersea. A most beautiful rose of recent introduction; this variety has long pointed buds of the largest size and very striking form; the color is bright cherry crimson, often approaching the shade of Liberty; the stems are stiff and long; a vigorous grower and very free in bloom; an excellent garden sort.

Lafrance. Silvery rose, shading to pink; very large and full; constant bloomer; sweetest scented of all roses.

Mme. Abel Chatenay. A beautiful creamy rose color, shaded with rose vermillion and tinged with salmon; the flowers are borne on long stems; well adapted for cut flowers.

Mme. Caroline Testout. Clear, bright rose, very sweet; flowers large and double, resembling Lafrance, but of more sturdy habit; very free flowering; one of the very best new roses.

Mme. Pernet Ducher. (The yellow Lafrance). Flowers semidouble; beautiful buds which are borne in great profusion; color bright canary yellow; bush of strong robust growth; a grand garden sort.

Meteor. One of the very brightest colored deep red roses in existence; the color is a rich, deep, velvety crimson exceedingly bright and striking; both buds and flowers are large, elegantly formed; fully double and borne on long stems; vigorous and healthy; a constant bloomer; quite hardy.

Mlle. Helena Cambier. Color lovely canary yellow, with deep peachy-red center, changing to creamy pink as the flowers open; it makes a neat, handsome bush, blooms quickly and abundantly all through the season, and the flowers are large, very double and sweet.

Mrs. B. R. Cant. A beautiful new rose on the style and color of Papa Gontier; the buds



Kaiserin Augusta Victoria.

are large and full; it is a very free grower and free bloomer. This variety has come to stay.

Mrs. Robert Garrett. A beautiful large rose of exquisite shape and finish; buds large and pointed, opening up in a beautiful rounded flower; color glowing, shell pink; delightfully fragrant.

Perle Von Godesberg. Originally sent out under the name of Yellow Kaiserin. A splendid rose, color a rich canary yellow with light saffron shadings; sure to please all rose lovers.

President Carnot. Color a delicate rosy blush, shaded a trifle deeper at the center of the flower, which is very large and exquisitely shaped, with thick, shell-like petals; strong grower, free bloomer; fragrant; a superb rose; one of the best varieties introduced in recent years.

Viscountess Folkstone. Very fine, large splendidly formed and of fine substance; color, creamy pink; bush, a very strong grower and a constant bloomer; one of the very best garden varieties.

White Lafrance. (Augustine Guinnoiseau). Identical with Lafrance, except in color, which is pearly white, sometimes tinted with fawn; a very free and continuous bloomer; very fragrant.

Winnie Davis. Color, apricot pink, shading to a flesh tint at the base of the petals; buds oblong and well formed; its habits are vigorous and free blooming; one of the finest newer roses.

Wm. R. Smith. A fine summer bedder which ranks well up with the two Cochetts; produces a profusion of fine flowers of creamy white with pink shadings; has good glossy foliage and grows into a strong bush.

THE HYBRID PERPETUALS.

This valuable class of roses is distinguished by its vigorous, upright growth, and large fragrant flowers. Being very hardy it succeeds in all parts of the country. While the small greenhouse-grown roses of this class sent out by advertisers of roses in the East do not, as a rule, bloom the first season, our large field-grown plants will rarely fail to give plenty of beautiful flowers soon after planting.

PRICES, 30c each; \$3.00 per 12; \$22.50 per 100.

Alfred Colomb. Brilliant carmine crimson; very large, full and fragrant. A superb rose.

American Beauty. Color a rich, rosy crimson; the beauty and fragrance of this rose is unsurpassed by any variety we know of; it is well named the American Beauty, for it is a queen among roses; the flowers are large, deep and very double, although the varieties in this class are not, as a rule, ever-bloomers, yet this grand rose will, with proper care, bloom throughout the entire summer.

Anna de Diesbach. A lovely shade of carmine; large double flowers; fragrant; one of the hardiest.

Baron de Bonstetten. Very dark red, almost black. Flowers fragrant, large and double.

Captain Christy. Extra large flat flowers; color a lovely shade of pale peach, deepening at the center to crimson.

Clio. A strong, vigorous grower; handsome foliage; flowers flesh color, large and globular, on the order of Baroness Rothchild.

Conrad F. Meyer. An exceedingly strong grower; perfectly hardy; flowers very large; well filled; color silvery rose; very fragrant.

Crimson Globe. (Moss). Color deep crimson; large, full and perfectly globular; habit of growth vigorous. One of the most beautiful of the Moss roses.

Emperor of Morocco. Intensely dark velvety maroon, one of the darkest roses in cultivation; very double and free flowering for an H. P.

Empress of India. Deep scarlet-crimson; very fragrant, double and of perfect form; bush a strong grower.

General Jacqueminot. An old popular variety; color brilliant crimson; large and effective.



Captain Christy.

Gloire Lyonnaise. White, tinted with yellow; large, full and of good form; very distinct and pleasing.

John Hopper. The flowers are large, very regular and full; color bright rose, changing to glowing pink; an old standard.

Jubilee. One of the grandest dark red roses yet offered; rich, deep red, shading to deep crimson and velvety maroon; flowers are large and borne freely,

Magna Charta. Flowers very large, full and fragrant; rosy red; vigorous.

Marshall P. Wilder. Color, cherry carmine, flowers are large, semi-globular, full and of good substance; free flowering; a very desirable rose.

Margaret Dickson. White, with flesh center; extra large flower with pale shell-like petals; good form, handsome foliage.

Mrs. John Laing. Exceedingly fragrant and a free bloomer; flowers a delicate pink and of beautiful form.

Paul Neyron. The largest rose in cultivation; a handsome upright grower, producing an immense flower at the end of every long stiff stem similar to American Beauty; color, a deep rose; a free bloomer; in every way a grand rose for general planting.

Prince Camille de Rohan. Deep, velvety crimson; large, full; one of the best of dark roses.



Ulrich Brunner.

flowers of fine form and finish, borne on strong stems nearly thornless; petals of great substance; plant hardy and vigorous; a free bloomer.

Queen of Edgley. Sometimes called the Pink American Beauty, from its similarity of habit and form of flower. Bright pink.

Roger Lambelin. A decided curiosity among roses; one of the freak roses that has become popular. The color is a glowing crimson, except the edges of the petals, which are irregular like those of a double petunia. These are distinctly marked with a white margin against the crimson, forming a distinct and unique contrast. The fragrance is delightful; the growth is vigorous, with foliage unusually large and handsome.

Soliel d'Or. (Golden Sun). A charming new hardy yellow rose. The first of a new race of roses. A cross between the Persian Yellow and Antoine Ducher; color, orange yellow, shaded to reddish gold; distinct and fine; grafted plants only.

Ulrich Brunner. One of the grandest hardy roses; color, a brilliant cherry red, a very effective color;

THE EVER-BLOOMING BOURBON, BENGAL AND CHINA ROSES.

This class of Roses is of easiest culture. They are all strong, vigorous growers, free and continuous bloomers. With moderate care they will produce a mass of bloom the entire growing season.

PRICES: 25c each; \$2.50 per dozen.

Agrippina. For bedding or hedge this rose is admirably adapted; it is a vigorous grower, carries its foliage well and is always in bloom; color brilliant red; double and sweet.

Bardou Job. Velvety scarlet, shaded very dark; flowers semi-double and opening widely; of tall, upright growth. A good companion for Gloire des Rosomanes.

Champion of the World. A fine hardy, ever-blooming pink rose; one of the best for outdoor cultivation; a strong grower, requiring little care; flowers are of medium size, but are produced in great profusion the entire season; full and fragrant.

Gloire des Rosomanes. (Ragged Robin). Without exception the most constant and free blooming of all roses; flowering well during the winter season unless checked by frost. Large semi-double flowers of brilliant crimson hue. Unexcelled for hedge or tall borders.

Malmaison. One of the best of its class; for general cultivation it is unsurpassed; the color is a rosy flesh, shaded with fawn; flowers very double and fragrant.

THE DWARF RAMBLERS AND POLYANTHA ROSES.

The Polyanthas are a lovely and distinct class of ever-blooming roses, distinguished by their dwarf growth and cluster of small to medium size flowers. Adapted for hedges.

PRICES: 25c each; \$2.50 for 12.

Anny Muller. (Pink Baby Rambler). Large clusters of brilliant rose-colored flowers in great profusion. A splendid bedding variety; flowers very persistent and of free growth.

Mlle. Cecil Brunner. An elegant little rose; rosy pink, shaded to bright salmon in the cen-

ter; borne in large, open clusters; a perfect little gem.

The Baby Rambler. (Mme. N. Levavasseur). The new ever-blooming dwarf Crimson Rambler is a phenomenally free bloomer. The plant is literally covered with clusters of pretty flowers from spring to fall.

LORD PENZANCE'S HYBRID SWEET BRIERS.

These beautiful roses are crosses between the common Sweet Brier and other garden sorts; the flowers are single or semi-double; the colors are all distinct and very beautiful. The foliage retains the sweet fragrance of the common Sweet Briar. They are very hardy and vigorous growers,

PRICES: 35c each; set of three, \$1.00.

Lord Penzance. Soft shade of fawn or ecru, passing to a lovely lemon yellow in the center, sometimes toned with a most delicate pink; sweetly perfumed. A vigorous grower, with deep green foliage, rendering a striking contrast to its beautiful blooms.

Lady Penzance. Beautiful soft tint of copper with a peculiar metallic luster; the base of each petal is a bright yellow, over which cluster the clear golden anthers; very free flowering, with a delicious perfume from foliage and flower; a luxuriant grower; habit of the best.

Meg Merrilies. Gorgeous crimson of the richest shade, robust habit of growth and free flowering; large foliage; one of the very best in its class, being an exceptionally free bloomer during the spring months; foliage possesses a pleasing fragrance characteristic only of the Brier roses.



Lord Penzance, Sweet Brier.

THE EVER-BLOOMING CLIMBING ROSES.

Climbing Roses are of great utility in beautifying porches, fences, arbors, etc.

PRICE: 30c each; \$2.50 per 12; \$20.00 per 100.

(These quotations apply where no other prices are given).

Claire Carnot. Buff or orange yellow, with peach blossom center; medium size; a dainty rose.

est growing, freest blooming and all around the most satisfactory white climber we have in the nursery.



Lamarque.

Climbing Bridesmaid. The flowers are identical with Bridesmaid; clear, dark pink; one of the very best climbing Tea Roses.

Climbing Cecil Brunner. The flower is identical with the well-known Bush variety, but of strong climbing habit.

Climbing Devoniensis. A grand rose, very sweet and fragrant, blossoms white, tinged with blush.

Climbing Hermosa. Flowers of this rose are borne in great profusion and are a clear, bright pink in color.

Climbing Kaiserin. (Mrs. Robert Peary). This is without doubt the grandest of all white climbing roses, of splendid substance; large, full, deep and double; it is one of the strong-

Climbing Malmaison. Color rich creamy flesh, shaded to peachy rose, with rose center. A strong, vigorous climber.

Climbing Marie Guillot. Color a pure snow white, sometimes faintly tinged with yellow.

Climbing Meteor. Flowers identical with Meteor; a robust grower.

Climbing Papa Gontier. Originated recently in California. The flowers are identical in color, form and fragrance with the bush Papa Gontier. Is a good climber and a constant bloomer. A splendid addition to the list of climbing roses.

Climbing Perle. The climbing form of this handsome yellow rose is too well known to require any description.

Climbing Testout. A sport from the bush of the same name; bloom identical with its parent. The color is a solid cerise pink and does not fade. The bloom is large and fragrant.

Climbing Wooton. A sport from Souvenir de Wooton, and is identical with it, except that it is a strong grower; blooms in great profusion; color, bright magenta, passing to a violet crimson.

Duchess de Arstadt. The color of this beautiful climbing rose is a rich golden yellow; of good form and a fine bloomer; a very rare and charming sort; like the Marechal Niel, it is a weak grower unless grafted or budded.

Francois Crousse. A beautiful new French rose of much merit. Bush of strong growth, producing throughout the season a wealth of large, deep cherry red flowers. A gem for the south and west.

Gainsborough. Delicately tinted flesh, almost white. Lustrous as satin.

Gloire de Dijon. Color rich creamy white, beautifully tinged with amber and pale blush.

James Sprunt. Bright crimson flowers, medium size, double; bush strong grower; an old, well-known variety.

Keystone. Perfectly hardy, very free bloomer and exceedingly vigorous; flowers are perfectly double and a deep lemon color; very fragrant; one of the fastest growers among the climbers.

Lamarque. Color white; beautiful buds, large, full flowers, very double and sweet; very popular.

Mme. Alfred Carriere. Color rich creamy white, tinged with pale yellow; flowers are large and full; one of the best light-colored climbing roses; a strong grower, nice foliage and good bloomer.

Mme. Wagram. It is well formed and well filled with firm, broad petals; opens freely and endures well on the stem when cut; color fresh satiny rose pink; of strong growth and good foliage.

Marechal Niel. The buds and flowers of this rose are superb; extra large, double and exquisitely perfumed; the color is a deep golden yellow; blooms very freely; throughout the south and west coast it attains a degree of perfection seldom seen in any rose; on its own root it is a weak grower; we, therefore propagate this variety by grafting on strong roots. Our stock this season is very fine. Large grafted plants 50c; extra large 75c.

Mary Washington. Flowers are borne in large clusters and in endless numbers; pure white, perfectly double and very sweet.

Reine Marie Henriette. Brilliant cherry red; very large and double; the very finest red climbing rose in the whole collection.

Reine Olga d'Wortemburg. Clear cherry red, margined with crimson; fine, large double flowers; borne in clusters.

Reve d'Or. Buff yellow; one of the best climbing roses; a strong grower and continuous bloomer.

Wm. Allen Richardson. Coppery yellow, suffused with carmine; a very pretty rose.

MISCELLANEOUS CLIMBING ROSES.

All the following are remarkably strong growers. Flowers are produced most profusely in the Spring, but as a rule are not everblooming. Valuable for training over walls, trellises and fences or trailing and covering banks or unsightly places.

PRICES. 30c each; \$2.50 per 12; \$18.00 per 100.

Banksia—Alba or White. A rapid growing, thornless climbing rose; flowers small, pure white; blooms in great profusion in early Spring; as the flowers are produced on the old growth they should be pruned very little.

Banksia—Lutea or Yellow. Identical with the above, excepting in color, which is a fine, clear yellow.

Cherokee. (*Rosa Sinica*). A splendid sort for covering verandas, arbors, etc.; also for hedge; its leaves are smooth and glossy as if varnished; highly ornamental at all times, but particularly so when covered with large, snowy white, single blossoms adorned with their fluffy, golden yellow stamens.

Climbing Clothilde Soupert. In this climbing form of Clothilde Soupert, we have a rose with the same vigorous constitution of its parent; hardy in the coldest sections of the East; a vigorous climber, which produces clusters of beautiful silvery rose-colored flowers.

Crimson Rambler. A well-known hardy climbing rose that has attained wide-spread popularity; a very strong grower, producing blooms in great bouquets of a lovely shade of crimson

Dorothy Perkins. Noted for its hardiness and vigorous habit of growth, beautiful color and freedom of bloom; the flowers are borne in large clusters; a beautiful shell pink color,

which lasts a long time without fading; this variety is suitable for situations where a trailing rose is desired or can be trained over arches or other supports.

Gold of Ophir. Nasturtium yellow, suffused with coppery red; one of the most beautiful of the climbing roses, covered in Spring with flowers in the greatest profusion; of strongest growth,

Philadelphia Rambler. The flowers are borne in grand clusters, very double; color a

deep rich crimson; it is a strong, fast grower with very luxuriant foliage; one of the best hardy climbing roses to date.

Pink Rambler. A pink form of the Climbing Rambler.

White Rambler. Similar to the other Climbing Ramblers, except in color.

Yellow Rambler. Flowers deep golden yellow; very hardy and fine.

STANDARD OR TREE ROSES.

PRICE: \$1.00 each.

These are grown in Standard form about four feet high. Choice varieties in the following colors—White, Pink, Red, Yellow.

In addition to these we have three colors budded on one stock.



American Beauty.

GRASSES AND CLOVERS.

No effect in the home grounds is quite so pleasing as a well-kept lawn, even though it is of small area. Appreciating this, we supply grass and clover seeds in connection with our plant business.

Kentucky Blue Grass. Finest imported Kentucky seed, pure and free from weed seed. Per lb. 35c; three lbs. \$1.00.

White Clover. Much used for lawns; can be sown alone or mixed with Blue grass; one

part of the former to two of the latter. Per lb. 35c; three lbs. \$1.00.

Bermuda Grass. Suitable for lawns in dry and arid situations where blue grass is apt to fail. Per lb. \$1.00.



DECIDUOUS TREES.

This class of trees furnishes ample material for shade and ornamentation of grounds during the summer season, dropping the leaves in the winter when shade is not desired.

BETULA. The Birch.

Betula pendula laciniata. (Cut leaved weeping). Of tall, slender, yet vigorous growth; silvery white bark and pendulous branches; foliage delicately cut; one of the best and most popular of all weeping trees. \$1.00.

CERCIS. The Judas Tree.

Cercis Canadensis. (Judas Tree or Red Bud). A very ornamental flowering tree or large shrub, which blooms in early spring just as the leaves begin to expand. The flowers are borne profusely in clusters, almost concealing the branches. Color reddish-purple. 50c.

FRAXINUS. The Ash.

Fraxinus lanceolata. (Green Ash). An excellent tree of medium size with spreading branches forming a shapely tree. Suitable for street planting or planting singly for shade. One year seedlings 10c; \$5.00 per hundred.

LIRIODENDRON. The Tulip Tree.

Liriodendron tulipifera. A medium-sized tree with bright green, glossy, fiddle-shaped leaves and tulip-like flowers. 50c to \$1.00.

MORUS. The Mulberry.

Morus alba tartarica. (Russian Mulberry). Its value lies chiefly in its hardiness and rapid growth a fine shade tree of spreading habit. 35c.

MELIA AZEDARACH. The Umbrella Tree.

Melia azedarach umbraculiformis. (Texas Umbrella). A splendid shade tree and one of the most useful for planting where dense shade is desired. Umbrella shaped, of dense growth and uniform habit, bearing numerous small lilac-colored flowers during the summer. 30c to \$1.00.

PLATANUS. The Plane Tree.

Platanus orientalis. (European Sycamore, Oriental Plane). Valuable for park and avenue planting; it grows rapidly into a uniform tree; the foliage is bright green; leaves deeply cut, similar to the maple leaf. It thrives well in California; many fine specimens may be seen in different parts of the country. 50c to \$1.00.

PYRUS. The Flowering Crab Apple.

Pyrus augustifolia. (Bechtel's Double Flowering American Crab). One of the most beautiful of the many fine varieties of flowering Crabs. Tree of medium size, covered in early spring with large, beautiful double, fragrant flowers of a delicate pink color. From a distance the flowers have the appearance of small roses. Blooms when quite young. 50c.

P. malus kaido. One of the most showy of flowering apples. Flowers single pink and white. Holds its handsome fruits all winter. 50c.

WEEPING DECIDUOUS TREES.

MORUS. The Weeping Mulberry.

Morus tatarica pendula. (Tea's Weeping Mulberry). Very ornamental and of drooping habit. Its long, slender branches curve gracefully to the ground, forming a dense umbrella-shaped head. \$1.00.

ULMUS. The Weeping Elm.

Ulmus scabra pendula. (Camperdown Elm). A variety of luxuriant growth and picturesque drooping habit. The branches shoot outward and downward in a way that forms a very graceful tree. \$1.00.

DECIDUOUS FLOWERING AND FOLIAGE SHRUBS.

This class is represented by a large variety of shrubs growing from three to ten feet in height, producing a wealth of beautiful flowers at different seasons, or a mantle of bright colored foliage.

BERBERIS. The Barberry.

Berberis. PURPUREA. (Purple leaved barberry). An interesting shrub growing 3 to 5 feet high, with violet-purple foliage and fruit. The contrast is very effective with plants of lighter foliage. Useful for groups, borders or planting singly. 25c. \$2.00 per 10.

B. thunbergii. One of the most valuable species, remarkable for its dense growth. Useful for borders of walks or drives. 25c.

CALYANTHUS. The Sweet Shrub.

Calycanthus, (*Calycanthus Floridus*) A fine, fragrant woody shrub, with chocolate-colored flowers, nicely scented. 35c.

CRATAEGUS. The Hawthorn.

Crataegus rosea plena. A pretty flowering shrub adorned with clusters of pink flowers in early summer, followed by small, scarlet berries in autumn. 50c.

CYDONIA. The Flowering Quince.

Cydonia japonica. (Japan Quince). A handsome early Spring blooming variety, with semi-double scarlet flowers, which are produced in great profusion; foliage bright green and glossy. 35c.

C. japonica. (Var. *Umbilicata*). Flowers brilliant, rosy red, succeeded by large showy fruit. Forms a fine large shrub. 35c.

ELEAGNUS. The Japan Oleaster.

Eleagnus Longipes. (Japan Oleaster). An ornamental shrub from Japan. Foliage bright green above, silvery white beneath. The flowers are fragrant and followed by large, edible fruit of pungent, agreeable flavor. 35c.

HYDRANGEA.

Hydrangea hortensis. An elegant shrub of dwarf habit, having large, heavy foliage and immense heads of light pink flowers throughout the summer. 25c to 50c.

LAGERSTROEMIA. The Crape Myrtle.

Lagerstroemia indica. Splendid summer flowering shrubs, very desirable on account of blooming during the Summer months when few other shrubs or trees are in bloom. The beautiful crimped, pink flowers are produced in large panicles at the end of each branch. 25c. to 40c.

LIGUSTRUM. The Privet.

Ligustrum ovalifolium. (California Privet.) Used in many parts of the country for hedges. \$3.00 to \$5.00 per 100.

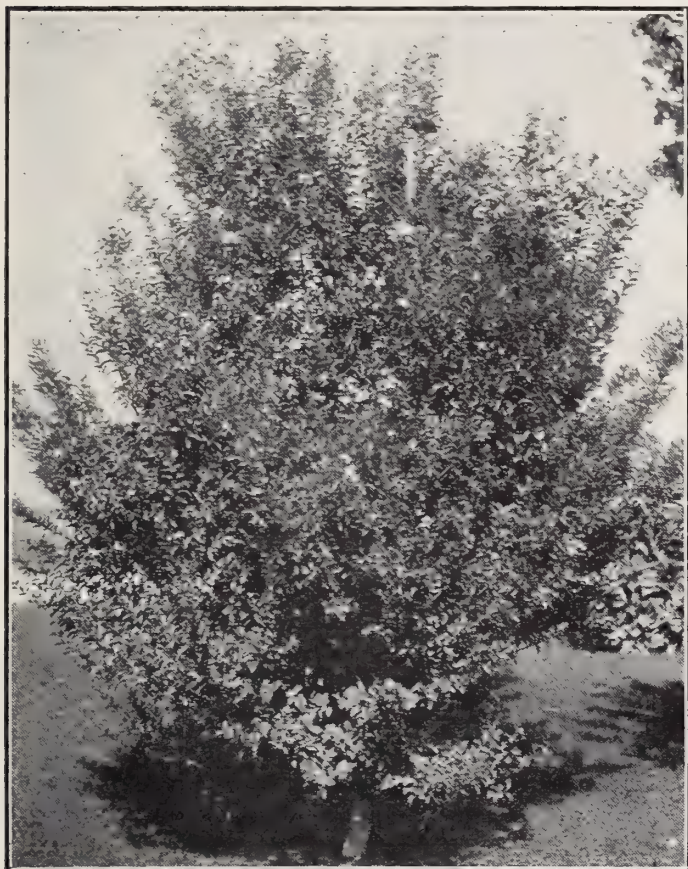


Hydrangea hortensis.

L. vulgare. (Evergreen or English Privet). Unsurpassed for a hedge or border. If pruned occasionally it makes a fine compact hedge; hardy and easily grown. \$3.00 per 100.

LIPPIA. The Lemon Verbena.

Lippia citriodora. (Lemon Verbena). A fast growing shrub with delightfully fragrant foliage; it bears minute flowers in delicate pyramidal spikes. 40c.



Crape Myrtle.

PUNICA. The Flowering Pomegranate.

These double-flowering forms of the Pomegranate make lovely ornaments for the lawn. They grow in large, shapely shrubs, the flowers of which are bright and showy.

Punica alba. Flowers large, double white. 35c.

P. rubra. Large double scarlet flowers, Very showy. 35c.

P. variegata. Large, double flowers beautifully variegated. 35c

SPIREA. The Bridal Wreath.

Spirea reevesii. (Bridal Wreath). A charming shrub, with narrow, pointed leaves and large clusters of white flowers that cover the whole plant in Spring. 35c.

SYRINGA. The Lilacs.

We offer these well-known flowering shrubs in the following choice named sorts :

Charles X. Flower trusses large and loose ; reddish purple. 50c.

Frau Dammon. White ; panicle very laage. 50c.

Lamarck. Very large panicle. ; rosy lilac. 50c.

Michael Buchner. Large, double flowers; pale lilac. 50c.

TAMARIX. The Tamerisks.

Tamarix Africana, A graceful shrub with feathery, cypress-like leaves and large panicles of showy, pink flowers, Blooms during early summer. 35c.

THE EVERGREEN SHRUBS.

The evergreen shrubs enumerated here comprise a select list of varieties which we deem best suited to the requirements of the southwest, including Arizona.

ARALIA. The Rice Paper Plant.

Aralia papyrifera. (Rice Paper Plant). A tropical-looking tree or shrub, furnished with large, showy, deeply-lobed leaves ; of easy culture ; a highly decorative plant for lawns or parking. 50c.

ARBUTUS. The Strawberry Tree.

Arbutus unedo. (Strawberry Tree). Medium sized shrub with clean, attractive foliage. They flower in the early winter, the blossoms being followed by red strawberry-like fruit which is edible. 35c to 75c.

BERBERIS. The Evergreen Barberry.

Berberis aquifolium. (Mahonia Aquifolium). A handsome ornamental shrub with dark, lus-

trous, spiny-toothed green leaves ; in winter the foliage assumes a bronze or coppery hue ; flowers yellow, in dense clusters, appearing in spring ; berries blue or nearly black ; thrives in most any kind of soil, but partial shade and ample moisture result in brighter and glossier foliage. 50c.

B. darwinii. (Darwin's Barberry). A small shrub with silky, brown branches. Leaves usually with three spiny points at the tip, dark, glossy green ; flowers orange-yellow, often tinged with red ; berries dark purple. 40c.

B. japonica. (Japanese Mahonia). Perhaps the most effective of the Mahonias on account of its large compound leaves, each having spiny-toothed leaflets of bright, shining

green. Flowers yellow, in long racemes, opening in early spring. Like all the Mahonias it thrives best in a partly shaded position. \$1.00.

BUXUS. The Box Trees.

Specially adapted for lawn and garden decoration. Of dwarf habit and compact growth; foliage varying from rich dark to lighter greens in the different varieties.

Buxus sempervirens. (Common Box). Shrub of dense habit and small, deep-green foliage. When pruned into proper shape it is very desirable for lawn or porch decoration. Small plants 10c; \$5 00 per hundred.

B. sempervirens aurea. (Golden Leaved Box. Of same habit as above, but with leaves striped and variegated with golden color. Specimens 50c.

B. sempervirens suffruticosa. (Dwarf Box. A fine small bush, with glossy, roundish leaves. Extensively used for edging. Specimens 50c; small plants \$5.00 per hundred.

CAMELLIA.

Camellia japonica. Evergreen shrub with shining dark-green leaves and producing beautiful waxy rose-like flowers of great substance and durability during the winter and spring. Thrives best in a shady spot. We offer a choice assortment in the following colors—Red, Pink, White and Variegated. \$1.00.

CASSIA.

Cassia floribunda. A very floriferous shrub, growing about 6 feet high. Flowers yellow and showy. The leaflets of the Cassia are of grayish-green color and are what is known in medicine as "Senna Leaves." Of easy culture; will thrive on the driest soils. 25c to 50c.

COPROSMA.

Coprosma baueri. Handsome, low growing shrub. The round leaves are very glossy, as if varnished. 40c.

DAPHNE.

Daphne odora. A small-growing handsome shrub of compact habit, bearing numerous small, intensely fragrant white flowers in the winter. Excellent for lawn specimens. 75c.

D. odora variegata. Of same habit as the above, excepting that the leaves are beautifully variegated and the flowers are pink. 75c.

DIOSMA. The Breath of Heaven.

Diosma alba. (Breath of Heaven). Dwarf, heath-like shrubs having small star-shaped white flowers, borne on the points of the twigs; being of a dainty and pretty appearance they are much used in floral work. Well suited to our dry climate. 40c.

ERICA. The Heaths.

Erica hyalina. One of the prettiest of the Heath Family. Pale rose flowers which literally cover the plant in Spring. These beautiful plants may be grown in almost any garden soil but they prefer a good moist, sandy loam in a cool and sheltered location. 60c.

E. mediterranea. (Mediterranean Heath). A small, compact shrub of feathery foliage. Produces purplish pink flowers in Spring. 50c.

LAURUS. The Laurels.

The Laurels are most valuable shrubs for the ornamentation of grounds. They thrive well not only on the Coast but in the interior of California and Arizona. *Laurus Nobilis* when grown as a tub plant is more suitable for porch and interior decoration.

Laurus cerasus. (English Laurel). A fine small tree or bush, with broad, shining leaves and creamy white flowers, followed by purple berries. A popular shrub which succeeds well in any position. 50c to \$1.50.

L. lusitanica. (Portugal Laurel). Dark green, glossy-leaved shrub, flowers of which grow in large panicles and are quite fragrant, particularly at night. Potted plants, 50c; field-growth plants, \$1.00.

Laurus nobilis, See under Miscellaneous plants.

HYPERICUM. The Gold Flower.

Hypericum floribundum. Of upright bushy growth. Foliage brilliant green; flowers golden yellow. Very showy and effective; if cut back occasionally will bloom more freely, 35c.

H. moserianum. (Gold Flower) Pretty, low-growing shrub; producing large, single, bright yellow flowers, which open out flat showing numerous long stamens. Very fine for massing. 35c.

GREVILLEA.

Grevillea thelmanniana. Beautiful evergreen shrubs having fine feathery foliage and producing throughout the Summer clusters of brilliant scarlet flowers, borne on the ends of the branches. 50c.

GENISTA. The Brooms.

The Brooms are of easy culture, enduring the desert conditions of the interior and not being particular as to soil.

Genista canariensis. (Broom). A free flowering shrub, attaining a height of from six to eight feet. The leaves are small and the bright yellow flowers are produced in great profusion. 40c.

G. hispanica. (Spanish Broom) An ornamental shrub with long slender green branches and showy yellow flowers, which are produced very freely. Especially adapted to a warm, dry climate. Of easy culture. 40c.

EUGENIA.

Eugenia myrtifolia. (Brush Cherry). Excellent shrub of easy culture; of erect and compact growth. Foliage glossy green except on new growth where it is of reddish hue. Flowers myrtle-like. 35c.

ESCALLONIA.

Escallonia rosea. A prettily foliaged shrub of free flowering habit. Leaves are round, rough and serrated; flowers dainty pink. Small plants 25c.

E. rubra. Similar in habit to the above; bright green leaves and red flowers. Small plants 25c.

MELALEUCA. The Bottle Brushes.

Melaleuca alba. A fine shrub or small tree having white flowers in pendulous spikes; said to grow well in salt, swampy land. 50c.

M. decusata A tall shrub with grayish leaves; adorned with lilac-colored flowers on short spikes. Easily grown. 50c.

MYRTUS. Myrtle.

Myrtus communis. (Roman Myrtle). Valuable for either single specimens or small hedge. The foliage is a shining green and highly aromatic. Bears numerous small white flowers, followed by black berries. Hardy and thrives well in the interior. 25c to 50c.

NERIUM. The Oleanders.

Nerium- (Oleander). A well-known popular shrub, which flowers continuously throughout the Summer; of easiest culture. We offer the following sorts, which are among the best:

Lillian Henderson. Double white, 40c.

Rosea. Double pink, 40c.

Madame Peyre. Straw Color, 40c.

Madoni grandiflorum. White, 40c.

Mrs. F. Roeding. Pink, 40c.

Prof. Durand. Amber-yellow, 40c.

Lutea. Yellow, 40c.

OSMANTHUS. Japan Holly.

Osmanthus aquifolium. Var. *Ilicifolius*, (Japan Holly). A very ornamental, small growing shrub, of stout, compact growth;

with coarsely serrated, glossy, green leaves, prickly margined; effectual as a potted plant, succeeds best in partly shaded place. 50c.

PITTOSPORUM. The Pittosporums.

Pittosporum eugenoides. Small tree or shrub of symmetrical, upright growth and light, shining-green foliage. A very satisfactory shrub for either single specimens, planting in masses or hedges. 40c. \$2.50 per 10.

P. undulatum. Small tree or shrub well furnished with deep green, glossy leaves, margins of leaves are often undulated; flowers very fragrant at night; it makes a highly ornamental hedge, and is fine for avenue planting, where a small tree is desired. Potted, 25c; boxed, per 50, \$4.00.

P. tobira. Pretty winter flowering shrub from Japan. Forms a dense, globular head. Flowers white and fragrant; hardy and easily grown. 35c to 50c.



Pittosporum undulatum.

P. tobira variegatum. A variegated form of the above. The foliage is variegated with white which gives it a conspicuous and pleasing appearance. 35c to 75c.

RAPHIOLEPIS.

Raphiolepis ovata. Ornamental evergreen shrub, growing from six to ten feet high, with stout, upright branches and dark green, lustrous foliage; leaves thick and bush beautifully compact; covered in Summer with white flowers, followed by black berries in Fall. 50c.

VIBURNUM. Laurustinus.

Laurustinus. Well-known shrubs valuable for either hedge or for single specimens; produces during the Winter season an abundance of white or flesh colored flowers. Balled, 50c; small plants for hedge, boxed, \$3.00 per 100; larger plants, boxed, \$5.00 per 100.

THE EVERGREEN TREES.

Under this head are grouped many species including coniferous Evergreens and other classes of ornamental and economic trees that retain their foliage throughout the year. Having such a wide range of form and usefulness a selection may be made to suit any purpose.

ACACIAS. The Australian Wattle Trees.

Quick growing trees and shrubs, which thrive well in the interior valleys of California and Arizona. The flowers of the different varieties vary from light to deep yellow, presenting a gorgeous appearance when in full bloom.

Acacia armata. (Kangaroo Thorn). An interesting shrub of spreading habit with small leaves. The flowers are small and are borne all along the branches in spring. A good hedge shrub. Small potted plants 25c.

A. baileyana. A handsome shade tree, with glaucous green fern-like foliage, yellow blossoms in clusters. 25c to 50c.

A. cultriformis. A dwarf-growing variety, with bluish foliage and small peculiarly-shaped leaves; bright yellow flowers. 35c.

A. dealbata. (Silver Wattle). A handsome tree at all times and remarkably so when in bloom. The foliage is similar to *A. Molissima* except that it is bluish-gray. An excellent, strong growing shade tree. 25c to 35c.

A. floribunda. An upright grower, with long, narrow leaves; small, yellow flowers blooms all summer; a fine variety. 25c to 50c.

A. latifolia. Tree of a spreading, somewhat drooping habit. The flowers are yellow; leaves lance shaped. One of the best Acacias. 25c to 40c.

A. linifolia. A small tree or tall shrub having long slender leaves; flowers yellow; valuable for grouping. 25c to 50c.

A. melanoxylon. (Black Acacia). A tall-growing variety; a fine tree for street planting, for which it is very popular. 25c to 50c.

A. molissima. A fine, large spreading tree, with feathery foliage; fast grower; flowers yellow. 25c to 50c.

A. pycnantha. (Golden Wattle). A vigorous variety with long leaves and bright yellow flowers, showy and fragrant. 35c.

A. salicina. A very rapid growing variety of branching habit. Trees of this variety will afford considerable shade two years after planting. Leaves are lanceolate; flowers yellow and borne in short racemes along the branches in great profusion. 25c to 50c.



Acacia melanoxylon.

A. verticillata. A bushy spreading shrub or small tree, with long linear leaves, closely set

with fine needle like spikes half to one inch long, flowers yellow. A rare and very ornamental sort. 25c to 50c.



Camphor Tree.

ARAUCARIAS.

These grand, coniferous Evergreens from the southern hemisphere are much prized as specimens for lawns. They are seen at their best in the coast sections, but where the climate is too severe they may be grown in pots or tubs and protected from the heat and cold. In this form they are very attractive.

Araucaria excelsa. (Norfolk Island Pine). A very symmetrical tree of impressive beauty. The branches grow in tiers, the ends forming a perfect star. Excellent for lawn or porch decoration. \$1.50 to \$2.00.

A. imbricata. (Monkey Puzzle). Said to be the only tree the monkey cannot climb, on account of its thick, sharp leaves which overlap each other and cover the branches. Of dwarf growth. \$1.00.

A. bidwilli. The branches grow in regular whorls, with small, sharp, deep green leaves. Somewhat hardier than Excelsa. \$1.00 to \$2.00.

CAMPHORA. The Camphor Tree.

Camphora officinalis. (Camphor). A fine ornamental tree with bright green leaves; makes a large symmetrical growth; produces the camphor of commerce. A splendid street tree. 25c to 50c.

CERATONIA. The Carob. St. John's Bread.

Ceratonia siliqua. (St. John's Bread). A handsome shade tree, with round, spreading top and small, glossy green leaves, bearing large edible pods. 25c to 50c.

CASUARINA. The Beefwood or She Oaks.

A very interesting and unique class of trees from Australia, remarkable for their rapid growth and leafless appearance. The numerous green slender jointed branches take the place of leaves. They will thrive in brackish and alkaline soils and endure the heat of the interior.



Araucaria excelsa.

Casuarina stricta. One of the best of the species. Grows to a height of 20 to 30 feet. Tree of rather upright growth; branches numerous, slender and short. 25c to 50c; boxes of 100, \$5.00.

C. quadrivalvis. Branches rather coarse and more open than the above. 25c; boxes of 100, \$5.00.



Cedrus deodara



Chamaecyparis lawsoniana.



Pinus coulteri.

CEDRUS. The Indian Cedar.

Cedrus deodara. A magnificent coniferous evergreen tree of pyramidal form from the Himalaya mountains. Foliage beautiful silvery green. One of the most handsome trees for the lawn. Thrives well in all parts of California and Arizona, enduring the desert conditions of the interior and not being particular as to soil. The finest and most rapid growing of all the cedars and worthy of a place in all home grounds. Potted plants 50c to 75c; field grown specimens with ball of earth \$1.50 to \$2.50.

CERASUS. The Evergreen Cherry.

Of all the splendid native California shrubs, the Wild Cherry is one of the handsomest. It grows naturally on the dry stony foothills and preserves its beautiful dark green foliage even throughout the driest summer, thus proving its adaptability to arid regions.

Cerasus ilicifolia (Mountain Evergreen Cherry). A beautiful shrub or small tree with rich green dense foliage. Leaves Holly-like, very glossy and having prickly edges. A native of the foothills of Southern California. Very effective for hedge or landscape work. Small plants in pots 25c; \$2.00 per doz.; large plants 50c.

C. integrifolia. (Catalina Cherry). Of similar habit to the above but the leaves are larger and less spiny-toothed. Tree grows rapidly under cultivation, making a compact, dark-green crown. Native of Catalina Island. 35c to 50c.

CHAMAECYPARIS.**The Lawson Cypress.**

A group of beautiful evergreens closely allied to the Cupressus family. They are particularly useful as specimens for garden and park ornamentation.

Chamaecyparis lawsoniana. (Lawson's Cypress). A graceful tree with grayish-green foliage, disposed to fern-like expansions. A native of this state. One of the most beautiful evergreens in cultivation. 50c to \$1.00.

C. lawsoniana allumii. A variety with foliage of bluish metallic hue. Small plants 35c.

C. lawsoniana triomphe de boskoop. A beautiful variety, distinguished by its strong and outstanding foliage. Small plants 35c.

CUPRESSUS.**The Cypress Trees.**

Cypress trees are a group of valuable and ornamental trees for park and street ornamentation, windbreaks and hedge. They thrive in almost any good soil throughout California, Arizona and the gulf states.



Cypress sempervirens.

Cupressus arizonica. (Arizona Cypress). A medium-sized tree with horizontal branches, forming a narrow, pyramidal head. A native of Arizona; thrives well in any good soil. Rare in cultivation. 25c to 50c.

C. funebris. Funeral Cypress. A singular tree with wide spreading, pendulous branches, forming a pyramidal crown. Foliage bright green. This variety doubtless obtains its name from being planted around many of the tombs in China, of which country it is a native. 50c.

C. macrocarpa. (Monterey Cypress). The well-known picturesque native California cypress. Widely planted and used for hedge, shade trees and windbreak. When young it withstands pruning and can be formed into a low compact or tall hedge as desired. In pots 25c; boxes of 100 \$1.50 to \$2.00.

C. sempervirens. (Italian Cypress). A tall, slender-growing tree; fine for cemeteries, gate posts and arches. In pots 25c; field grown with ball of earth 50c to 75c.

EUCALYPTUS. The Australian Gums.

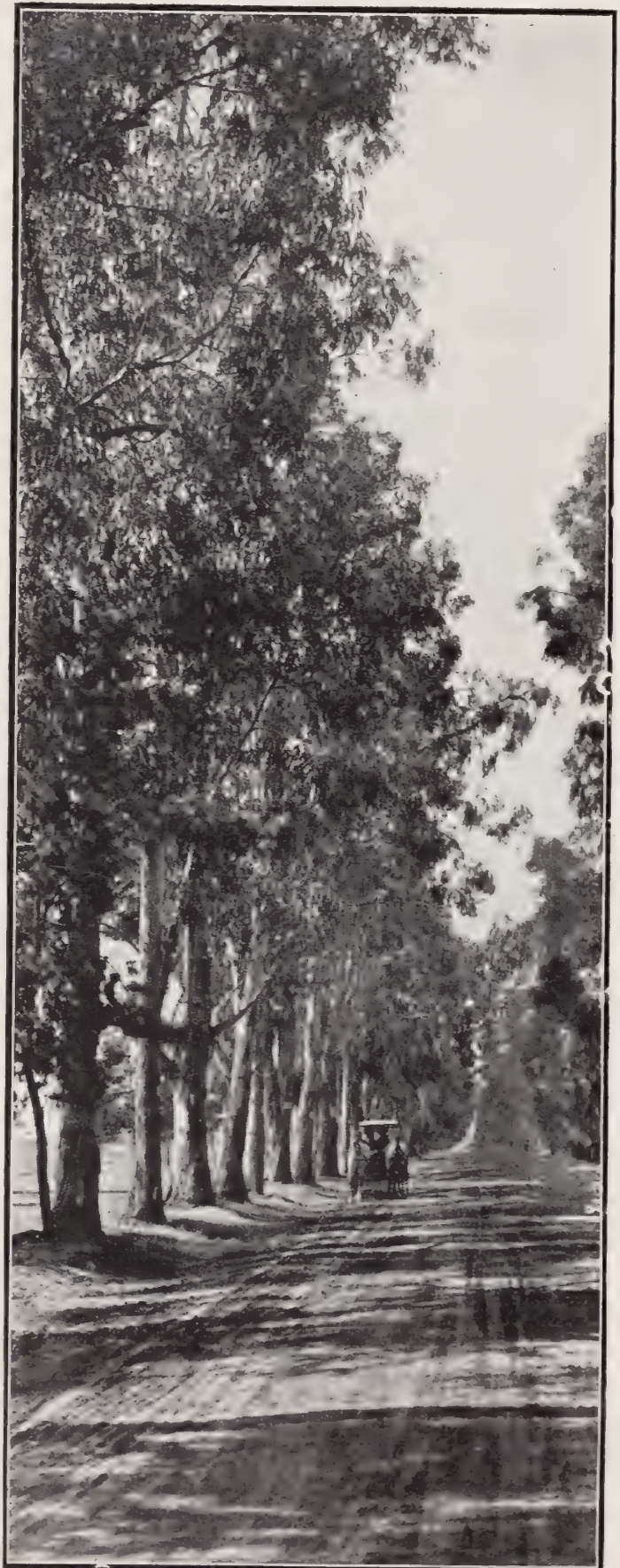
For good reasons, no forest trees have commanded such wide attention of late as the Australian Eucalypts, as they are of easy culture and rapid growth and possess great value for avenue, shade and ornamental planting. Their timber will take a finish equal to mahogany and has the strength and durability of oak and hickory, which always command a high price.

When planted for timber the young plants are usually placed from 8 to 10 feet apart each way, after having the soil thoroughly prepared by plowing and leveling. The plants should be taken from the boxes by cutting with a case knife, allowing each plant a square of earth, which should not be removed from the roots.

Plant a little deeper than they were in the boxes; water well. Keep thoroughly cultivated and free from weeds. After two or three years they will take care of themselves.

Eucalyptus botryoides. (Bastard Mahogany). A handsome tree during the early years of its growth, and when grown is very stately in appearance. It is especially suited to the coast region. The timber is of a reddish color, very hard and lasting. Potted 25c to 50c.

E. citriodora. (Lemon-Scented Gum). A very attractive variety which is valuable chiefly as an ornamental tree. The leaves emit a very pleasant fragrance, similar to the lemon; owing to its tall and slender habit of growth, it must be pruned back occasionally or the leaves and flowers will not be accessible; it thrives well in the coast region, but is sensitive to frost. Potted 25c; boxed, per 100, \$2.00.



Eucalyptus globulus.

E. cornuta. (Yate Tree). A hardy growing variety; wood durable, heavy and elastic. Recommended for alkali land and said to thrive where other varieties will perish. Boxed, per 100, \$2.00.



Eucalyptus polyanthema.

E. corynocalyx. (Sugar Gum). An erect and symmetrical tree of rapid growth. The Sugar Gum is well adapted as a forest cover and timber tree; it thrives near the coast and grows equally well in the dry valleys of the interior; while it profits by moisture, it will endure much drought. The trunk usually grows straight and tall and the timber is lasting; these characteristics tend to make it valuable for telegraph poles, posts, etc. Potted 25c; boxed, per 100, \$1.50 to \$2.00.

E. crebra. (Narrow Leaved Iron Bark). One of the hardiest, straight, tall and of slender growth. Useful for masts, railroad ties, etc. Endures a great variety of climatic conditions. A good all-around variety, 100 feet. In pots 25c; boxed, \$2.00 per 100.

E. diversicolor. (Karri Gum). A rival of the Blue Gum; this is one of the largest and grandest trees grown in Australia; specimens of this variety attain a height of four hundred feet; does not endure well the dry heat of the far interior, but is said to be quite resistant to frost. In pots 25c; boxed, per 100, \$2.00; boxes of 50 larger plants, twice transplanted, \$1.50.

E. ficifolia. (Scarlet Flowering Gum). An ornamental variety of dwarfish habit, with bright scarlet flowers; blooms in June. In pots 25c to 50c.

E. globulus. (Blue Gum). The variety most extensively used for windbreaks and fuel; thrives in all localities within one hundred miles of the coast; a very rapid grower. Potted 15c to 25c; boxed, per 100, \$1.00; large size \$1.50 per 100.

E. goniocalyx. (New South Wales Blue Gum). Wood very desirable, hard and tough. A rapid grower, particularly in higher altitudes; 300 feet high. Boxed, per 100, \$2.00.

E. hemiphloia. (Common Box). A first-class fuel tree. Wood very hard and strong. Will stand ranges in temperature from 15 to 105 degrees. Boxed, per 100, \$2.00.

E. longifolia. (Woolly Butt). A tall straight growing tree with long, sickle-shaped leaves. Timber durable. Does best near the coast. Profuse in bloom. Boxed, per 100, \$2.00.

E. leucoxylon. (Victorian Iron Bark). Very hard, strong and durable, excelling hickory. Adapted to mine work, bridges and railroad ties. Does well over a large area from coast to Phoenix, Ariz. Boxed, per 100, \$2.00.

E. melliodora. (Yellow Box). Grows well near coast, on sides of low mountains and in the warm interior valleys. Very durable, making good telegraph poles and fence posts. Also prized as a source of honey, on account of its profuse, fragrant bloom. 120 feet. Boxed, per 100, \$2.00.

E. piperita. (Peppermint Gum). Noted for its great yield of oil and quick growth. Timber good for shingles, fence rails, etc. Boxed, per 100, \$2.00.

E. polyanthema. (Red Box). This is commonly a medium-sized tree, but is said to reach a height of 150 feet in Australia; the tree is of a spreading habit, and with its characteristic foliage and profuse bloom presents a very

pleasing appearance; leaves round and of an ashy or dull green hue; thrives well at or near the coast, in the foothills, on the mountain sides, and in the hot, dry valleys of the interior; the timber is very hard, strong and durable; its habit of growth and pleasing aspect render it a good ornamental shade tree. Potted 25c to 40c; boxed \$2.00 per 100; boxes of 50 larger plants, twice transplanted, \$1.50.



Eucalyptus rostrata.

E. punctata. (Leather Jacket). Does well near coast. Wood tough, hard and close-grained. Useful for ties, implements and fence posts. Boxed, per 100, \$2.00.

E. resinifera. (Forest Mahogany). A superior timber tree of large size, prized for its strength and durability. Fine for interior house work. 100 feet. Boxed, per 100, \$2.00.

E. rostrata. (Red Gum). As a commercial timber tree this variety is unsurpassed. It is a rapid grower, endures much heat, severe frost and considerable drouth. The timber is valuable for many purposes; in fact can be used for any purpose where a hard, durable wood is required. The tree is adapted as a forest cover, windbreak or shade tree. Potted, 25c to 35c; boxed, per 100, \$1.50 to \$2.00; boxes of 50 larger plants, twice transplanted, \$1.50.

E. rudis. (Desert Gum.) A valuable species; in habit, erect and stately; a vigorous and rapid grower; bark grayish; leaves of young trees round, later becoming lance shaped; endures without injury minimum temperature of 15 degrees F. and maximum temperature of 110 to 118 degrees F. We recommend this variety very highly for the dry, hot sections of the interior. Excellent specimens of this tree have been growing for some years in parts of southern Arizona and have made a

rapid growth, proving their adaptation to a dry, warm climate. Potted, 25c to 40c; boxed, per 100 plants, \$1.50 to \$2.00; boxes of 50 larger plants, twice transplanted, \$1.50.

E. sideroxylon, var. rosea. (Red Iron Bark). An attractive variety having rough bark; long, very narrow, silvery leaves and dainty pink flowers. The general appearance of the tree would suggest its adaptability as an ornamental shade tree. The timber is very strong and durable. Potted, 25c.

E. stuartiana. (Apple Scented Gum.) A medium-sized tree with drooping branches. Does best in higher altitudes and near the coast. Boxed, per 100, \$2.00.

E. tereticornis. (Forest Red Gum.) Similar in climatic requirements and uses to the *E. rostrata*. When growing near together they are usually tall and straight, otherwise more branching and stocky. The timber is reddish, very hard, heavy and durable. Potted, 25c to 50c; boxed, per 100, \$1.50 to \$2.00; boxes of 50 larger plants, twice transplanted, \$1.50.



Eucalyptus rudis.

E. viminalis. (Narrow Leaved Red Gum). A hardy, rapid grower, enduring well both heat and cold. This variety is exceeded in quickness of growth only by the Blue Gum. Very useful for windbreak, forest cover and fuel. Potted, 25c; boxed, per 100, \$1.50; boxes of 50 larger plants, twice transplanted, \$1.50.

FICUS. The Rubber Tree.

Ficus elastica. (India Rubber Tree.) An elegant decorative tree with large thick glossy leaves. Grown as a potted plant it is useful for inside decoration, and when planted out of doors in frostless places will grow into a large and strikingly handsome tree. \$1.00.

F. macrophylla. The leaves are smaller than the above, Tree more hardy. Valuable for street or park planting. \$1.00.

GREVILLEA. The Australian Silk Oak.

Grevillea robusta. (Silk Oak.) A graceful tree, with fern-like leaves; covered in summer with golden-red flowers; valuable for avenue planting. 25c to 50c.

ILEX. The Holly.

Ilex aquifolium. (English Holly) A small tree or shrub of pyramidal form. The deep, lustrous green leaves are spiny toothed, and form a rich contrast with the firey colored berries which adorn the plant in the winter season. Small plants 50c; 4-ft. plants \$4.00.

I. aquifolium. Variegated. A handsome species of the above, having beautiful variegated foliage. Beautiful specimens \$3.00.

JACARANDA.

Jacaranda mimosaefolia. A beautiful evergreen tree, with immense, long, fern-like leaves and purple blossoms; endures heat well, but rather susceptible to frost. 50c.

LEUCADENDRON. The Silver Tree.

Leucadendron argenteum. (The Silver Tree.) A native of the Cape of Good Hope. One of the most interesting and beautiful of all ornamental trees, and exceedingly difficult of propagation; the leaves are of a silvery hue, densely covered with silky, white hairs, giving a unique effect to the whole tree; of rather slow growth but of handsome appearance at all stages. Two to three feet \$5.00.

LIBOCEDRUS. Incense Cedar.

Libocedrus decurrens. (Incense Cedar.) One of the finest of our specimen trees. Branches are spreading and clothed with glossy bright green foliage. A native of California and Oregon. 50c.

MAGNOLIA. The Bull Bay Tree.

Magnolia grandiflora. (The Bull Bay.) The well known Magnolia of the South. The stateliness of form and lavish yield of immense, fragrant, white flowers tend to place this magnificent tree in the foremost rank among our ornamental trees. Pot grown 50c; field grown with ball of earth \$1.00.

M. grandiflora exoniensis. This variety is somewhat hardier than *M. grandiflora*. Leaves more pubescent underneath; has the advantage of producing its massive white flowers when only a few feet high. \$2.00.



Soquoia gigantea.

PARKINSONIA. The Jerusalem Thorn.

Parkinsonia aculeata. (Jerusalem Thorn.) A showy ornamental tree of the Palo Verde type. The feathery branches have a drooping habit, and bear handsome yellow flowers. It thrives on the driest soils, and endures some cold; succeeds well in the warmer parts of Arizona and California. 50c.

PINUS. The Pines.

Of these well-known trees only a limited number of varieties are grown to any extent in California. The varieties named below are native to this state, excepting *P. canariensis*, and are of vigorous growth and of more or less regular pyramidal habit during the early years of growth. They become more picturesque as they attain age.

Pinus canariensis. (Canary Island Pine.) A handsome pine of rapid growth. Foliage grayish-green and lustrous. Potted 35c; field grown \$1.00.

P. coulteri. (Big Cone Pine.) A native of California. The needle-like leaves are very long, stiff and clustered at the end of the branchlets; bluish green. The cones of this variety are of immense size. (See illustration on page 38.) Potted 50c; field grown \$1.00.



Sterculia diversifolia,

P. torreyana. A rare species with spreading and sometimes ascending branches. Branchlets greenish-purple; leaves rigid, dark green, 8 to 13 inches long. Grows naturally on the bluffs of Del Mar, Southern California. Potted 50c; field grown \$1.00.

P. radiata. (Monterey Pine.) The well-known native species. A handsome tree with bright green foliage and bushy habit when young. The fastest grower of all pines. Valuable for quick effect. Makes a good windbreak, and adapts itself readily to single planting in private and public parks. Potted 25c; field grown 50c to \$1.00.

QUERCUS. The Evergreen Oaks.

The most picturesque trees that grace the landscape of Southern California are the Evergreen Oaks. They grow easily under cultivation and soon form handsome trees.

Quercus agrifolia. (California Live Oak.) The best known of the native oaks. The leaves are small, edges spiny-toothed. A majestic and handsome tree. 50c to \$1.00.

Q. chrysolepsis. (Golden Cup or Canyon Oak.) Another magnificent variety of the California evergreen oak. It has a wide, spreading head and often pendulous branches. 50c to \$1.00.

Q. suber. (Cork Oak.) A native of Southern Europe. This splendid evergreen variety, with its rounded head and upright habit of growth, is a very desirable tree for the southwest. From this variety the cork of commerce is obtained; the bark is spongy and deeply furrowed, which adds to its appearance as an ornamental tree. 50c to \$1.00.

RETINOSPORA. The Japanese Cypress.

Retinospora pisifera aurea. *Chamaecyparis.* (Golden Pea Fruited Cypress.) A Japanese evergreen of great hardiness and vigor. The new growth of this variety is rich golden yellow, eventually changing to green. Branchlets nodding; very showy. 50c.

R. pisifera plumosa. (Plume-like Cypress.) One of the most popular varieties. Very dense foliage of bright green hue. 50c.

R. pisifera plumosa aurea. (Golden Plumed Cypress.) This is decidedly the best of the variegated forms. Terminal foliage bright golden yellow. 50c.

R. pisifera squarosa. (Veitch's Silver Cypress.) This is a very distinct variety, and perhaps one of the best of the Japanese Cypress. Foliage silvery-blue, soft and dense. 50c.

SCHINUS. The Pepper Tree.

Schinus molle. (The California Pepper Tree.) A valuable tree for shade and windbreaks; planted extensively in the southwest; enduring much heat and drouth; covered in summer with red berries. (See illustration on page 2.) Potted 25c to 50c; boxed, per 100, \$2.00.

SEQUOIA. California Big Tree and Redwood.

These remarkable trees are natives of California and are found in no other part of the world. They are among the largest and most picturesque trees known. During the early years of their growth they are very shapely and much prized as ornamentals.

Sequoia gigantea. (California Big Tree.) A handsome tree of symmetrical, pyramidal shape, with thickly furnished branches. Foliage bluish-green. \$1.00.

S. sempervirens. (Redwood.) This differs from the big tree in that it makes a taller and more slender tree, the branches of which are less dense and broader. The branches grow slightly downward, which imparts a graceful appearance to the tree. It is unsurpassed as an ornamental tree. 75c to \$1.50.

STERCULIA. The Bottle Tree.

Sterculia diversifolia. The greatest point in favor of this magnificent street and avenue tree, is the fact that its roots do not in any way interfere with the pavements in city streets. The bright green foliage is constantly changing shape, there sometimes being three or four distinct varieties on the same tree. The graceful tapering habit of the trunk and foliage makes it exceedingly desirable. 50c.

THUYA. The Arborvitae.

These symmetrical hardy evergreens are great favorites for formal gardens, and are well suited for hedges and massing. As tub plants they are very durable and attractive.

Thuja orientalis aurea. (Golden Arborvitae.) A low compact shrub, the foliage of which assumes a beautiful golden-yellow color early in the season. 50c to \$1.00.

T. orientalis aurea nana. (Berkman's Golden Arborvitae.) One of the best and most popular of the dwarf hardy evergreens. Very compact shrub with golden-yellow foliage. 50c to \$1.00.

T. orientalis pyramidalis. (Pyramidal Oriental Arborvitae.) One of the tallest and hardiest varieties of pyramidal outline. 50c to \$1.00.

T. rosedale hybrid. Beautiful Cypress-like shrub. A cross between the Arborvitae and Japanese Cypress, retaining, to a certain extent, the characteristics of both. Very compact; foliage bright green. 50c to \$1.00.

UMBELLULARIA CALIFORNICA. California Laurel or Bay.

Umbellularia Californica. (California Laurel or Bay.) The well known native bay or laurel found growing in the canyons and foothills of California. The leaves are long, dark-green and strongly aromatic, containing a volatile essential oil, the fragrance of which reminds one of bay rum. One of our finest native trees and well worthy of cultivation. \$1.00.

PALMS, CYCADS, YUCCAS, BAMBOOS, ETC.

No plants that find congenial conditions in California and Arizona lend themselves so admirably in producing tropical foliage effects as these plants, or are more easily grown and to be obtained at less cost and effort. Our selection embraces all the hardier sorts for conservatory and garden culture.

THE PALMS.

Chamaerops excelsa. (Windmill Palm.) Trunk tall, slim and very hairy. Leaves fan-shaped, deeply cut; very hardy. A most useful palm for small lawns as it requires but little space. Potted plants 25c to 50c; field grown \$1.00 to \$2.00.

C. humilis. (Dwarf Fan Palm.) A hardy dwarf growing palm with small, fan-shaped leaves and spiny stalks. Excellent for lawn where a dwarf palm is desired. Specimen plants \$2.00.

COCOS.

Cocos australis. A rare and beautiful palm with pinnate, glaucous-colored leaves which recurve gracefully. Of slow growth and very hardy. Small plants 50c; specimen plants \$5.00 to \$10.00.

C. plumosus. (The Ornamental Coconut Palm.) Of tall, slender growth; stem smooth, with finely divided plummy leaves. A tender sort which can only be grown in mild sections of the country along the sea coast or frostless places. Small plants 50c, larger plants \$2.50 to \$5.00.

CYCAS.

Cycas revoluta. (Sago Palm.) An excellent plant for either scenic planting or apartment decoration: The round stem or bulb is crowned with dark green pinnate leaves, shaped like ostrich plumes. Quite hardy. We have these in all sizes with from 4 to 20 leaves. 50c. to \$5.00.

ERYTHEA.

The Erythea Palms are natives of Mexico and are well adapted to conditions in our dry



Cycas revoluta.

climate. They are hardy and well worthy of a place in any grounds.

Erythea armata. (Blue Palm.) Of slow growth; leaves fan-shaped; silvery green. 50c to \$1.00.

E. edulis. An excellent clean-looking palm. Leaves broad, resembling the common fan palm, but less coarse and free from filaments. \$1.00.

JUBEA.

Jubea spectabilis. (The Wine Palm of Chili). When young this fine palm resembles the Phoenix; with age it forms a thick, smooth trunk which gives it a distinctive appearance. A rare variety. In small tubs \$5.00.

PHOENIX.

Under this heading are varieties known as the Date Palms. All have long pinnated leaves.

Phoenix canariensis. (Canary Island Palm.) This is easily the best palm for general planting. Very appropriate as an ornament for the porch or other decoration, being a slow grower in pots or tubs. When given room in the ground it grows rapidly and forms a magnificent spreading palm; very hardy. Small pot-

ted plants 25c to 50c; field grown specimens \$1.00 to \$5.00.

P. reclinata. When small has fewer leaves than *P. canariensis*. Of graceful drooping habit; with age trunk grows tall and slender \$1.00 to \$2 00.



Washingtonia robusta.

WASHINGTONIA.

Washingtonia robusta. The best of the well known fan palms grown in California. Of tall growth and robust habit; valued for street and park planting. 50c to \$1.00.



Phoenix canariensis. Page 45.

BAMBUSA. The Bamboos.

Bambusa vulgaris. (Giant Bamboo.) A very rapid grower, attaining the height of forty feet, and forming in two or three years a magnificent clump of immense canes four inches in diameter, when mature; produces a fine tropical effect. \$1.50.

DASYLIRION.

Dasyilirion glaucum. A beautiful yucca-like plant with narrow, drooping glaucous, green-colored leaves; edges of leaves bordered with small teeth; very ornamental. 50c to \$1.00

DRACAENA.

Dracaena australis. Grows to height of from 10 to 15 feet. A fine tropical-looking plant with yucca-like leaves that arch and droop gracefully from central stems. Specimens \$1.00 to \$2.00.

D. indivisa. Leaves narrow; a fine tall growing variety. The young potted plants are useful for decorative purposes. Potted plants 25c to 50c.

YUCCA.

Yucca pendula. A valuable plant for hot or exposed places; leaves 18 to 20 inches long, and from 1 to 1½ inches wide; of a graceful pendulous habit; excellent as a potted plant for porch entrances, etc. 50c to \$1.00.

CLIMBING AND TRAILING PLANTS.

Under this head are enumerated a most useful and ornamental class of plants, suitable for covering arbors, porches, walls, banks, festooning between pillars, etc. Most of them are evergreen but where this is not the case the exception will be noted.

AMPELOPSIS.

Valuable hardy, deciduous, clinging vines, useful for covering walls, chimneys or stone work. Climbing, as they do, by tendrils, they adhere closely to any object.

Ampelopsis quinquefolia. (Virginia Creeper.) Large, green foliage, changing to brilliant scarlet in the fall and later dropping the leaves. 35c.

A. engelmannii. Similar to the above, with smaller leaves and more dense foliage. Clings well to any object. 35c.

A. veitchii. (Japanese or Boston Ivy.) A graceful vine closely clinging to walls. Leaves changing from green in summer to gorgeous tints of scarlet and yellow in fall. 35c.

BIGNONIAS.

Bignonia venusta. The flowers are crimson orange, mostly in drooping racemes, profuse bloomer and altogether a very satisfactory vine. 35c.

B. tweediana. An excellent plant for covering walls; a very strong grower, sending up many long, slender shoots, which cling to any surface; flowers are trumpet-shaped, two inches long and orange yellow. 25c.

B. siderifolia. One of the best of this type of climbing plants, hardy and of large, strong growth; beautiful tubular-shaped yellow flowers hang in clusters over the dense foliage, which give to it a pleasing aspect. 35c.

BOUGAINVILLEA.

Bougainvillea glabra. One of the most beautiful and attractive flowering climbers we possess; the foliage is handsome and the brilliant majenta-rose colored flowers adorn the plant during the whole season. 35c to \$1.00.



Lonicera halleana.

B. lateritia. The most admired and desirable of the bougainvilleas. Flowers larger than the above. Soft brick-red which harmonizes well with other colors. Extremely difficult of propagation. \$2.50 to \$5.00.

CLEMATIS.

Slender-branched climbing shrubs which produce beautiful large flowers that are admired by all. The following choice named sorts are among the very best:

Clematis henryii. The finest large white clematis.

C. jackmannii. Large, rich, velvety purple; very popular.

C. Mme. Eduard Andre. Crimson red, large and very fine, 2-year plants 60c each; set of three varieties \$1.50.

DIOSCOREA. The Cinnamon Vine.

Dioscorea batatas. (Cinnamon Vine.) A tuberous-rooted climber of rapid growth; the sweet-scented flowers are produced in spikes at the base of the leaves. 25c.

FICUS. The Fig Vine.

Ficus repens. A dainty and pretty little climber with small round leaves; from Japan; clings to wood or other supports; fine for covering low walls. 25c; \$2.00 per dozen.

HEDERA. The Ivy.

Hedera helix. (English Ivy.) An old, well-known climber, with dark, glossy, green leaves. 25c.

JASMINUM. The Jasmine.

Jasminum grandiflora. One of the best white species; blooms almost perpetually during the summer and fall; erect growing, branches drooping and angular. 25c.

J. malayan. (*Rhynchospermum Jasminoides.*) This is one of the most desirable Jasmynes known; the dark evergreen foliage, in contrast with the pure white waxy flowers, makes a very effective plant. The flowers have a most delicate odor. 35c.

J. revolutum. Bright yellow, fragrant blossoms; a strong and rapid grower. 25c.

IPOMOEA. The Moonvine.

Ipomoea. (Moonvine.) Rapid growing climbers; white or purple flowering varieties. 25c.

LONICERA. The Honeysuckle.

Lonicera halliana. (Hall's Japan.) Evergreen, vigorous climber; flowers pure white, changing to yellow; deliciously fragrant; borne in great profusion during the summer and fall. One of the best. 25c.

L. semperflorens. (Red Coral.) A high-climbing vine with stems ten to fifteen feet long; leaves oval or oblong, green or bluish-green above, glaucous beneath; flowers scarlet, about two inches long, profuse and very showy. 25c.

L. variegata. (Variegated.) Foliage mottled yellow and green. Succeeds anywhere. 25c.

MANDEVILLEA. Chili Jasmine.

Mandevillea saueolens. (Chili Jasmine.) A beautiful climber, with clusters of waxy-white star-shaped flower; very fragrant. 35c.

MUEHLENBECKIA. Wire Vine.

Muehlenbeckia. (Wire Vine.) Rapid growing twining vine, with dark wiry stems and tiny leaves; known sometimes as the Maiden Hair Vine. Excellent for covering trees or fences. 25c.

PASSIFLORA. The Passion Vine.

Passiflora. (Passion Vine.) An attractive and rapid climber, covering a large space in very short time, and bearing exquisitely formed flowers throughout the summer and fall. Colors, pink, red or white. 35c.

PLUMBAGO. The Leadwort.

Plumbago capensis. Flowers a most delicate shade of azure-blue; unrivalled for their continuous blooming and drouth-resisting qualities; foliage clean and smooth. Can be grown as a spreading shrub or trained as a climber. 25c to 40c.

P. capensis alba. Identical with the above excepting that the flowers are white. 25c to 40c.

P. larpentae. (Lady Larpent.) A low-growing species of the plumbago; fine for edging or rockeries; flowers intense blue and therefore very showy and unique. 25c.

ROSES.

See climbing roses.

TECOMAS. The Trumpet Vine.

Tecoma grandiflora. (Chinese Trumpet Vine.) A high climbing shrub with numerous stout and spreading branches. Flowers two inches across; borne in large, terminal clusters; bright scarlet. Hardy and loses its foliage in winter. 25 to 40c.

T. radicans. (American Trumpet Vine). A strong growing vine, more slender than the preceding. The flowers differ by being longer and narrower; rich scarlet color. Very hardy; deciduous. 25c to 40c.

T. jasminoides. Evergreen climbing shrubs; flowers white, rosy pink in the throat; the leaves are smooth and glossy. Makes a very pretty plant where a medium-sized climber is wanted. 25c.

T. mackenzii. A strong growing variety, which quickly develops into a large vine; the flowers are light pink of a pretty shade; of easiest culture. 25c.

SOLANUM.

Solanum seafortianum. Of very slender growth and bearing clusters of azure-blue flowers. 35c.

S. wendlandii. A handsome climber for porch decoration. The leaves are large and variable. The flowers are light blue, about two inches across and borne in clusters. 35c.



Tacoma grandiflora.

WISTARIA.

Wistaria chinensis. (Chinese Wistaria.) A very strong grower; a high climber and twines tightly. Flowers sky blue, in pendulous clusters. Blooms very profusely in early spring. 40c to 75c.



Wisteria chinensis

W. chinensis alba. (White Chinese Wistaria). A fine variety with white flowers; otherwise same habit as the preceding. 40c to 75c.

W. multijuga. (Japanese Loose-clustered Wistaria.) A rare species, bearing purplish or lilac-colored flowers in immense loose clusters, sometimes two feet in length. 75c.

MISCELLANEOUS PLANTS.

In this department will be found Bedding and Border Plants, Herbaceous Perennials, Ferns, Bulbs, Grasses, Potted Plants for house decoration and conservatory, etc.

ABULTILON. The Flowering Maples.

Golden Bells. A beautiful shrub with long maple-like leaves; flowers bell-shaped, golden-yellow. 25c.

Souvenir de Bonne. A type of the flowering maple with beautiful variegated leaves. 25c.

Royal Scarlet. Flowers rich royal scarlet. 25c.

ALTERNANTHERA.

A very useful foliage plant used for carpet bedding, edging, etc.

Alternanthera aurea nana. A handsome dwarf variety with variegated yellow and green leaves. 50c per 12; \$2.50 per 100.

A. paronychoides major. The colorings in this variety are very effective, shading from crimson through salmon-yellow to green; used with Aurea nana for contrast. 50c per 12; \$2.50 per 100.

ARRHENATHERUM.

Arrhenatherum bulbosum folia variegatum. A dwarf decorative grass with slender green leaves bordered with white; fine for pots or small hanging baskets. 35c.

ASPARAGUS.

These plants, known as Asparagus Ferns, are grown for their beautiful and delicate foliage. Very popular for pot culture or can be trained as climbers when planted in the ground in a protected place.

Asparagus plumosus. Foliage delicate and feathery; gracefully arched, each section being flat. Excellent for house decoration. 25c to \$1.00.

A. sprengeri. Of drooping habit. Valuable for hanging baskets or other decorative purposes. More hardy than plumosus. 25c to \$1.00.

AZALEA INDICA.

Beautiful flowering plants, most attractive when used as potted specimens; are usually in bloom from Christmas to Easter.

Azalea de schryveriana. Rich rose, shaded vermilion; white margin. \$1.00.

A. deutsche perle. Double; pure white. \$1.00.

A. Mme. Petrick. Double; bright rose. \$1.00.

A. Mme. van der Cruzssen. Semi-double; crimson. A beauty. \$1.00.

A. niobe. Double white; very early. \$1.00.

A. Professeur Wolters. Single; pink, white margin. \$1.00.

BEGONIAS.

Begonia rex. This type of Begonia with its broad leaves and richly-colored markings is very popular. 25c.

B. vernon or semperflorens. Useful for outdoor cultivation; fine for edges of beds; they bloom throughout the entire season; three varieties, white, pink and crimson flowering. 10c; \$1.00 per dozen.

CALLA LILY.

Richardia africana. The well-known white Calla Lily which needs no description. 10c each; 75c per dozen.

CANNAS.

The Canna is one of the most popular garden plants for tropical effect; the broad leaves and gorgeous flowers make a grand display during the entire summer.

Buttercup. Beautiful clear yellow; dwarf.

Burbank. Of tall, vigorous growth. Flowers lemon-yellow.

Charles Henderson. A popular sort; crimson; of uniform habit.

Louise. Pink; center beautifully mottled with yellow.

Luray. A pleasing deep, rosy pink.

Mme. Crosy. Bright scarlet with golden edge; very fine.

Mont Blanc. White. A rare color in Cannas.

Pennsylvania. Vermilion scarlet, overlaid with an orange sheen; flowers very large and fine.

Venus. The flowers are pink, bordered with white; very unique and showy.

PRICES: 15c each; \$1.00 per dozen.



Calla Lily.

CARNATIONS.

Carnations are general favorites for their delicious fragrance and richness of colors. To obtain the best results keep the flower shoots pinched back until the plant has sufficient strength to support blooms.

Eldorado. Canary yellow, distinctly edged and penciled bright carmine.

Enchantress. Beautiful light pink; large.

Estelle. A very fine scarlet.

Gov. Walcott. An excellent white.

Harlowarden. Rich dark crimson.

Mrs. Thomas Lawson. A well-known sort; color deep cerise-pink.

Prosperity. Large and full; variegated.

Queen Louise. One of the best of the white varieties.

Red Lawson. A bright pleasing scarlet of Lawson type.

R. P. Enchantress. A bright rosy pink; sport of Enchantress.

Victory. Color brilliant scarlet.

Variegated Lawson. A pretty comingling of pink and white.

Windsor. Clear silvery-pink.

PRICES: 10c each; \$1.00 per dozen.



Mrs. Thos. W. Lawson Carnation.

CENTAUREA. Dusty Miller.

Centaurea candidissima. The foliage of this variety is silvery-white and compact in growth; much used as a low foliage border plant, not being allowed to bloom; exceedingly ornamental in contrast with flowering plants.

C. gymnocarpa. This variety differs from the above in that the leaves are longer, narrower, and more deeply serrated.

10c each; 75c per doz.

CHRYSANTHEMUMS.

Alice Roosevelt. Flowers of fine substance, broad and incurving; a very fine white bloom.

Alliance. Enormous, incurving, golden-yellow flowers; very showy and beautiful.

Ben Wells. An immense reflexed flower, of great beauty; delicate flesh color.

Black Hawk. One of the best dark sorts.

Col. Appleton. Very large; golden yellow; a leading commercial sort.

Gold Mine. Rich golden yellow; outer petals reflexed.

Good Gracious. A delicate shade of peach pink; immense incurved flower; the finest of its color.

John K. Shaw. Deep shell-pink; large, round and double, with semi-reflexed florets.

Mrs. H. W. Rieman. Deep golden yellow, incurved; the best late in its color.

Mrs. Winthrop Sargent. An enormous yellow flower, quilled florets, irregularly incurved.

Mme. Carnot. A superb white bloom, of great depth; very fine.

Silver Wedding. A splendid white flower of great size; fine form and foliage.

Timothy Eaton. Very large, semi-incurved flowers; best commercial white.



Alice Roosevelt Chrysanthemum.

W. K. Chadwick. An immense graceful bloom; waxy white; sometimes tinted pink.

William Duckham. A deep pink, incurved flower of great beauty.

Chrysanthemums ready in March.

PRICES: 15c each; \$1.00 per dozen.

CALADIUM.

Caladium esculentum. (Elephant's Ear.) The leaves are of enormous size, which lend a tropical effect to the plant. Requires a liberal amount of water during the summer. 25c.

CYCLAMEN.

Cyclamen persicum. Charming plants with beautiful foliage and richly colored, fragrant flowers. We have the giant varieties which have stout flower stalks carrying the blossoms well above the foliage; deep blood-red. Potted plants in bloom. 50c.

DAHLIAS.

Many of the choicest sorts of Cactus and decorative dahlias. 15c each; \$1.50 per dozen.

EUONYMUS.

Euonymus microphyllus. Fine for borders or for low hedge. Leaves small; foliage compact. Sometimes known as dwarf Japan Box. Endures the heat of the interior. 50c per 10; \$2.50 per 100.

FERNS.

Nephrolepis exaltata. (Sword Fern.) The common well known variety having long narrow leaves; rather upright growing. 40c to 75c.

N. bostoniensis. (Boston Sword Fern.) A popular type of the Sword Fern. The wide drooping fronds produce a graceful effect. Good specimens from 40c to \$1.00.

N. whitmani. The latest and best of the Boston ferns; known as the Ostrich Plume Fern; the leaves are beautifully fringed, giving a charming effect. Well furnished plants 50c to \$1.50.

Woodwardia radicans. This grand hardy fern is useful for outdoor planting in shady spots. The fronds are large, being two to four feet in length; gracefully curved. \$1.00 each.

FUCHSIA.

Fuchsia. Well-known flowering plants for pot culture or can be grown in good soil in partly shaded locations. Best varieties. 25c.

GLADIOLUS.

Gladiolus. (Groff's Hybrids.) These are among the brightest and handsomest of all flowering bulbs; easy to grow and sure to bloom; the flowers are of richest colors and are fine for cutting. 10c each; 75c. per dozen.

GERANIUMS.

Blush. A light pink ivy-leaved sort; of very strong growth.

Charles Turner. The best pink; ivy-leaved.

Gringoire. Deep rosy carmine; a fine ivy-leaved sort.

General Grant. Standard, double scarlet bedder.

John Forbes. Rich single scarlet.

Jacquerie. Brilliant crimson-scarlet; immense trusses on long stems.

Jean Viaud. The finest semi-double pink geranium; very free in bloom.

Lyonaise. Fine single red with white center.

Mme. Selaroi. Dwarf, for edging. The leaves are margined with white.

Rose Scented. Leaves highly perfumed.

White Empress. An excellent double white.

White Queen. Finest single white.

White Ivy. A splendid ivy-leaved white.

Prices; 10c each; \$1.00 per 12; \$5.00 per 100.

GYNERIUM. Pampas Grass.

The Pampas Grass, from the plains of the River Platte in Argentine, is one of the most popular and hardy exotics of our gardens and fields. Its beautiful white plumes ascending from the immense clumps of green give it a strikingly individual appearance and lend a variety to the garden that is unique. Also possesses an economic value from the fact that the plumes have a commercial importance, being extensively used for indoor decoration, lending themselves to artificial coloring and the plant is hardy and well adapted to arid conditions.

Gynerium argentea. The most widely cultivated of the pampas grass. Plumes white. 50c.

G. Jubatum. The leaves are broader than the other sorts and plumes more feathery and glossy. Of a lavender color.

G. "Mme. Rendlateri." Plumes pink, shading to lavender. 50c.

G. "Roi des Roses." Leaves broad. Plumes rosy-purple. Best for winter blooming. 50c.

HELIOTROPE.

Czar. Deep purple, very large flower, which grows on a stiff, upright stem.

Queen of Violets. Light violet-blue, with small white eye.

PRICES: 25c each; \$1.50 per 12.

HIBISCUS.

Peachblow. A pretty flowering plant or shrub, blooming throughout the summer. This variety has large double pink flowers. 50c.

HYDRANGEA.

Hydrangea hortensis. A popular garden plant or shrub furnished with large foliage and immense heads of light pink flowers, having a tinge of blue when grown in soils containing iron, 25c to 50c.

JASMINE.

Jasmine. (Grand Duke.) The double wax-like flowers of this fine variety are exquisitely fragrant. A low growing shrub; excellent for pot culture or planting in a shady corner. 40c.

LANTANAS.

We possess few bedding plants that afford a greater variety of color and bloom more continuously than the Lantana; we offer our four best varieties in the following colors: orange, yellow, pink and white. 25c each; \$1.50 per 10.

LIPPIA REPENS.

This new lawn grass (or properly speaking, a plant) is just the thing for lawns in hot, dry sections of the southwest. Not suitable for shady locations, but thrives remarkably well in the full sun. The beautiful grounds of the Coronado hotel have been changed over to Lippia, and, as it becomes better known, is largely used. Little or no mowing is necessary and walking over it rather improves it. Requires water only occasionally. The sods are cut up in small pieces and planted 12 to 18 inches apart. \$1.00 per box, containing enough for 80 plants.

LOBELIA.

Lobelia cardinalis. Has spikes of brilliant scarlet flowers and bronze foliage. Fine for borders. 10c each; 50c per dozen.

L. crystal palace compacta. A dwarf edging plant with dark blue flowers and small, rich green foliage. 10c each; 50c per dozen; \$2.50 per hundred.

LOTUS PELIORYNCHUS.

Very pretty for hanging baskets and rockeries. Branches slender and drooping. Silvery gray adorned with scarlet flowers, creating a unique contrast. 25c to 50c.

PANSIES.

We grow this beautiful flower in large quantities, using only the best strains, embracing a great variety of colors. 30c per dozen; \$2.00 per 100.

MARGUERITES.

Giant White. Single flowers produced in great profusion; valuable in exposed places.

Giant Yellow. Similar to the above; flowers deep yellow.

Blue Marguerite. A hardy bedding plant, with pale blue flowers.

PRICES: 10c each; \$1.00 per dozen.

PERENNIAL PHLOX.

Among hardy perennial plants the Phlox is one of the most satisfactory. It is easily cultivated, and flowers during the entire summer and until late in the fall. The colors are varied and striking.

Amoor. Deep pink; center darker.

Aquillion. White, with red eye.

Coquelicot. Intense scarlet.

Cross of Honor. Lilac, margined lighter.

Eclairer. Purplish crimson.

Lothair. Cerise salmon, with crimson.

Maculata. Deep lavender.

Pearl. Beautiful white.

PRICES: 15c each; \$1.50 per dozen.

PETUNIAS.

We have grown a fine assortment of this popular flower, both single and double; many of them fringed, and in various colors. 15c each; \$1.50 per dozen.

PHORMIUM TENAX.

Phormium tenax variegata. (New Zealand Flax.) This plant is very handsome having stiff sword-shaped leaves, which are nicely variegated, and orange-colored flowers produced on long spikes. A fine, large growing plant for the greenhouse, conservatory or lawn decoration. \$1.50.

POINSETTIA.

The well-known and highly ornamental "Christmas Flower," native of Mexico. Unsurpassed for the splendor of its immense brilliant scarlet flower bracts and its bright green and showy leaves. A universal favorite in California gardens. 35c to 50c.

ROMNEYA.

Romneya coulteri. (Matillija Poppy.) The handsomest of our native flowering plants. It forms a shrub or large bush of silvery hue. The flowers are of immense size with poppy-like petals of pure white and a center of rich yellow stamens. The individual flowers are lasting and the plants bloom all summer. Endures well the heat of the interior and considerable cold. Not particular as to soils, but seen at its best on sandy washes. Potted plants \$1.00.

RUSSELIA.

Russelia juncea. Stems drooping, rush-like; bears tubular like scarlet flowers. For hanging baskets and rockeries. 25c.



Romneya coulteri.

SALVIA.

Bonfire. A favorite bedding plant, bearing long spikes of the most dazzling scarlet blooms; this variety is the most gorgeous of the scarlet sages.

Patens. As blue as the bonfire is red.

PRICES: 10c each; \$1.00 per dozen,

SANTOLINA. The Coral Plant.

Santolina. A dwarf bushy growing plant 12 to 13 inches high with silvery coral-shaped foliage. Effective as a border plant or low hedge along walks and flower beds. Occasional pruning will cause it to grow compact. Thrives in the interior, enduring heat, cold and drouth; not particular as to soil. 50c per 10; \$2.50 per 100.

TRITOMA UVARIA.

Red Hot Poker. A flowering plant of great beauty, bearing torch-like spikes of bloom, three to five feet high. The color varies from rich ochre-red to salmon-pink and yellow; very suitable for hot or exposed places. 25c each.

SHASTA DAISY.

One of the most popular garden flowers of recent introduction. Its long period of bloom in our dry climate has made it a popular favorite. The flowers are immense, of pure white with yellow centers, and long stems, which as cut flowers maintain well their form and color. The plants bloom throughout the year, but are usually at their best in the spring and summer.

Alaska is the best of the improved sorts. 25c each; \$2.00 per dozen.



Shasta Daisy.

TUBEROSES.

Excelsior Dwarf Pearl. Flowers pure white and of exquisite fragrance. A most popular flowering bulb which blooms year after year and is of easy culture. First-class bulbs, 5c each; 50c per dozen.

Armstrong's Everblooming. A grand, new addition to the tuberose family, blooming profusely and producing single flowers of a delightful fragrance similar to that of the Jasmine. Excellent for cut flowers. Selected bulbs 10c each; \$1.00 per dozen.

VIOLETS.

California Violet. An excellent of long-stem, profuse bloomer and very fragrant. Potted plants 50c per doz.; \$3.00 per 100.

WEeping LANTANA.

Of weeping or drooping habit; suitable for hanging baskets or trailing over rockeries; flowers shell pink. 25c.

VERBENAS.

A most satisfactory bedding plant for a hot, dry climate. If planted in good soil and given reasonable care they will bloom almost the whole year. They should be cut back to the ground at least once a year or when the vines begin to look old and leggy.

Apple Blossom. Pink, shaded with blush.

Blue Bell. Rich purplish blue.

Lavender Lady. Delicate shade of lavender.

Maiden Blush. Light pink.

Purple Prince. Royal purple.

Queen. Bright carmine.

Royalii. Purple, with white eye.

Scarlet Beauty. A magnificent scarlet of the most brilliant hue; flowers large and velvety; unsurpassed for massing where a show of color is desired.

PRICES: 50c per dozen; \$3.00 per hundred.

FORMAL BOX AND BAY TREES.**BUXUS. The Box Trees.**

The Box Trees are beautiful lawn shrubs or small trees of dwarf and compact habit; the trained forms are useful for formal decorative work. We offer some fine tub-grown specimens in round form.

Specimen plants, 2 ft, untrimmed, \$1.00 each.

Globe-shaped 3 ft. high, \$5.00 each.

Globe-shaped 12x12 in. diameter, \$2.50 each.

Globe-shaped 18x18 in. diameter, \$4.00 each.

LAURUS. The Bay Trees.

Laurus nobilis. (Sweet Bay.) Handsome ornamentals, commonly cultivated as tub plants. Trained specimens are very effective as formal decorations, especially for doorways, entrances and terraces. We offer fine select specimens, grown in tubs, in both globe-shaped and pyramidal form.

Pyramidal, 5-ft. high, 24-in. base, \$10.00 each.

Globe-shaped, 4-ft. high, 24-in. \$10.00 each.

Globe-shaped, 6-ft. high, 30-in. \$15.00 each.

FREE PACKING.

People giving these nurseries their orders should bear in mind that we make no charge whatever for packing. At the same time we want it understood that we do not slight our business in this respect, no matter how small the order. Remember, you are always safe when dealing with this establishment.



Box Tree, round form.

THE LABEL OF QUALITY

From Armstrong Nurseries, Ontario, Cal.



• WHICH GUARANTEES THE PLANT TO WHICH IT IS ATTACHED.

TOPICAL INDEX

CITRUS FRUITS

	PAGE
Citron.....	4
Lemon.....	4
Orange.....	3
Pomelo.....	4

DECIDUOUS FRUITS.

Apple.....	9
Apricot.....	6
Cherry.....	11
Fig.....	12
Loquat.....	13
Mulberry.....	13
Nectarine.....	9
Peach.....	5
Pear.....	11
Persimmon, Japanese.....	13
Plum.....	7
Pomegranate.....	14
Prune.....	8
Quince.....	12

NUT FRUITS.

Almond.....	15
Chestnut.....	14
Walnut.....	14

GRAPES AND OLIVES.

American Grapes.....	15
Foreign Grapes.....	16
Olives.....	16

SMALL FRUITS.

Blackberry.....	18
Dewberry.....	17
Gooseberry.....	19
Guava.....	17
Loganberry.....	18
Raspberry.....	18
Strawberry.....	18

VEGETABLES.

	PAGE
Asparagus.....	19
Horse Radish.....	19
Rhubarb.....	19
Sweet Potato.....	19
Tomato.....	19

ROSES.

Bourbons, Bengals, Chinas.....	21
Everblooming Climbers.....	28
Everblooming Teas.....	21
Hybrid Perpetuals.....	25
Hybrid Teas.....	23
Miscellaneous Climbers.....	29
New Varieties.....	20
Penzances' Sweet Briars.....	27
Standard Tree Roses.....	30

GRASSES AND CLOVERS.

Bermuda Grass.....	30
Kentucky Blue Grass.....	30
White Clover.....	30

ORNAMENTALS.

Climbing and Trailing Plants.....	46
Deciduous Flowering and Foliage Shrubs.....	32
Deciduous Trees.....	31
Eucalyptus.....	39
Evergreen Shrubs.....	33
Evergreen Trees.....	36
Formal Box and Bay Trees.....	55
Free Packing.....	55
Miscellaneous Plants.....	49
Palms, Cycads, Yuccas, Etc.....	44
Topical Index.....	56
Weeping Deciduous Trees.....	31

Choice Specials in Field-Grown Roses and other Plants

THE following collections of roses embrace some of the leading kinds both as to robust growth and prolific blooming qualities. They are selected with a view of affording a constant supply of blooms and a wide range in form and color. We ship in first-class condition, properly labeled, and send only to one address.

Rose Garden No. 1.

16 Varieties, \$3.00

STRONG-GROWING, EVER-BLOOMING SORTS

Agrippina, crimson
Bride, white
Baby Rambler, crimson
Gruss an Teplitz, red
Helen Gould, carmine
Kaiserin, white
Madame Lombard, rosy salmon
Madam Cochet, pink
Marquis de Querhoent, china rose
Etoile de France, red
Papa Gontier, cherry red
Perle des Jardins, yellow
President Carnot, rosy blush
Valle de Chamounix, blush
Cl. Kaiserin, white
Cl. R. M. Henriette, cherry red

Purchaser to Pay Express Charges

Rose Garden No. 2.

15 Varieties, \$3.00

SUITABLE FROM MAINE TO CALIFORNIA.

American Beauty, rosy crimson
Anne de Diesbach, pink
Clio, flesh
Captain Christy, pale peach
Gen. Jacqueminot, crimson
Gloire Lyonnaise, yellow
Jubilee, deep red
La France, pink
Mrs. John Laing, pink
Paul Neyron, deep pink
P. C. de Rohan, crimson
Roger Lambelin, variegated red
Ulrich Brunner, cherry red
Cl. Clothilde Soupert, flesh
Crimson Rambler

Purchaser to Pay Express Charges

Rose Collection No. 3

30 Roses, \$5.00

3 Bride, white
3 Duchess of Albany, deep pink
3 Gruss an Teplitz, bright red
3 Helen Gould, red
3 Kaiserin, white
3 Maman Cochet, pink
3 Madame Pernet Ducher, yellow
3 Papa Gontier, red
3 R. M. Henriette, red climber
3 Cherokee, white climber

Purchaser to Pay Express Charges

Plant Collection "A" \$3.00

OUR SELECTION OF VARIETIES.

5 Cannas, assorted colors
2 Begonias, different kinds
4 Carnations, selection of colors
1 Cyclamen, pot grown
1 Heliotrope, best sort
2 Lantanas, two kinds
5 Geraniums, all different
2 Marguerites, yellow and white
5 Verbenas, striking colors
5 Perennial Phlox, various colors
3 Roses, all favorites

Purchaser to Pay Express Charges

Plant Collection "B" \$5.00

OUR SELECTION OF VARIETIES.

10 Geraniums, leading kinds
10 Roses, variety of colors
10 Carnations, in variety
10 Cannas, assorted colors
10 Gladiolus, Groff's hybrids
10 Perennial Phlox, latest introductions
10 Verbenas, various colors

Purchaser to Pay Express Charges

